

Mounting instructions for F 1206 Turn-tilt fitting with gear F 1030 with drilling template set Ident.-Nr. 063418

Range of applications, fittings chamber and mounting dimensions see installation drawing No. 50940-EP-001 sheet 1

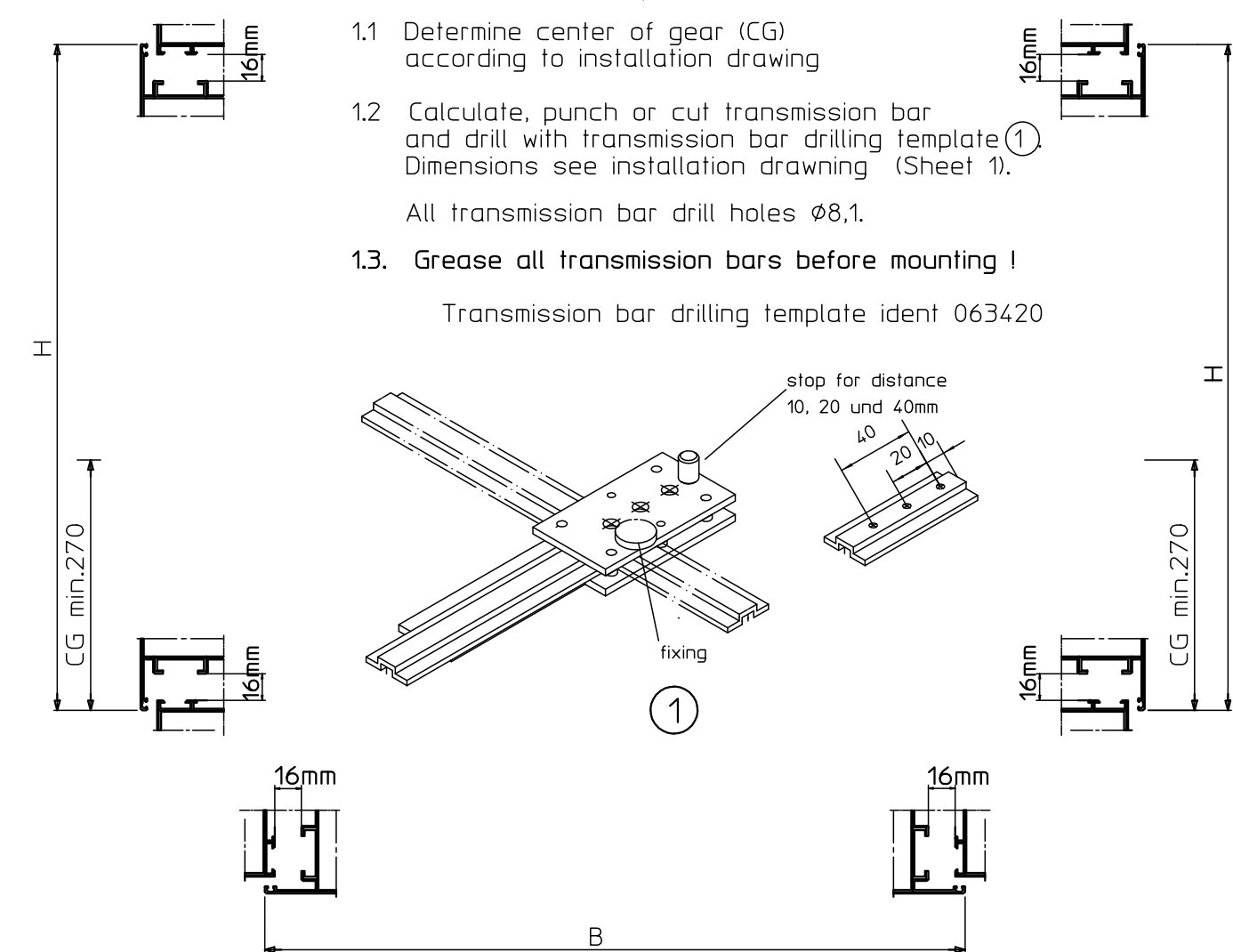
I. Measure casement and frame.

Check chamber dimension 16mm.

II. Mounting at casement.

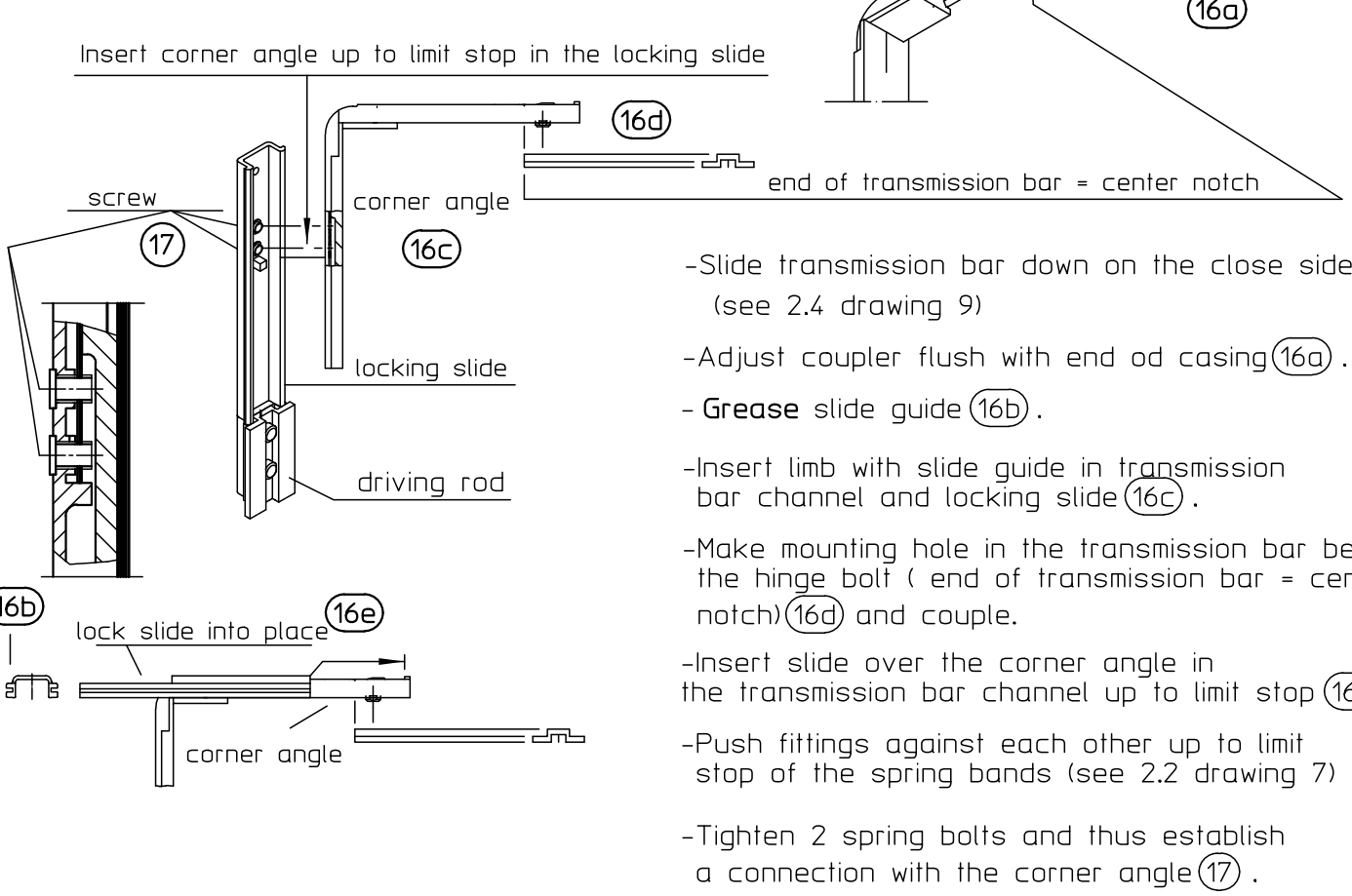
1. Mechanical operations

- Determine center of gear (CG) according to installation drawing
- Calculate, punch or cut transmission bar and drill with transmission bar drilling template (1). Dimensions see installation drawing (Sheet 1). All transmission bar drill holes $\varnothing 8,1$.
- Grease all transmission bars before mounting I
 Transmission bar drilling template ident 063420

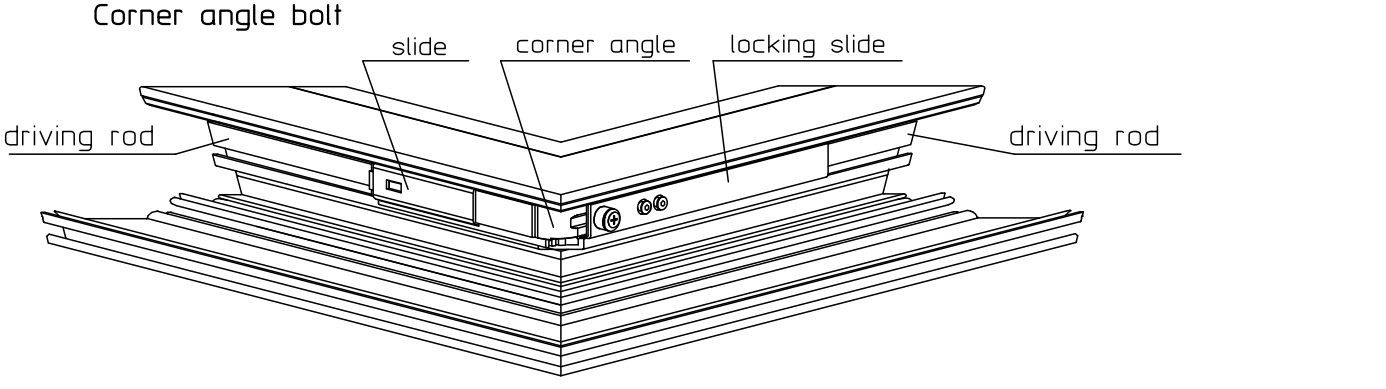


CG = Center of gear
 B = casement width
 H = casement height

2.8 Assembly of corner angle for installation with horizontal central locking system and central locking system with hinge



- Slide transmission bar down on the close side. (see 2.4 drawing 9)
- Adjust coupler flush with end of casing (16b).
- Grease slide guide (16b).
- Insert limb with slide guide in transmission bar channel and locking slide (16c).
- Make mounting hole in the transmission bar below the hinge bolt (end of transmission bar - center notch) (16d) and couple.
- Insert slide over the corner angle in the transmission bar channel up to limit stop (16e).
- Push fittings against each other up to limit stop of the spring bands (see 2.2 drawing 7)
- Tighten 2 spring bolts and thus establish a connection with the corner angle (17).

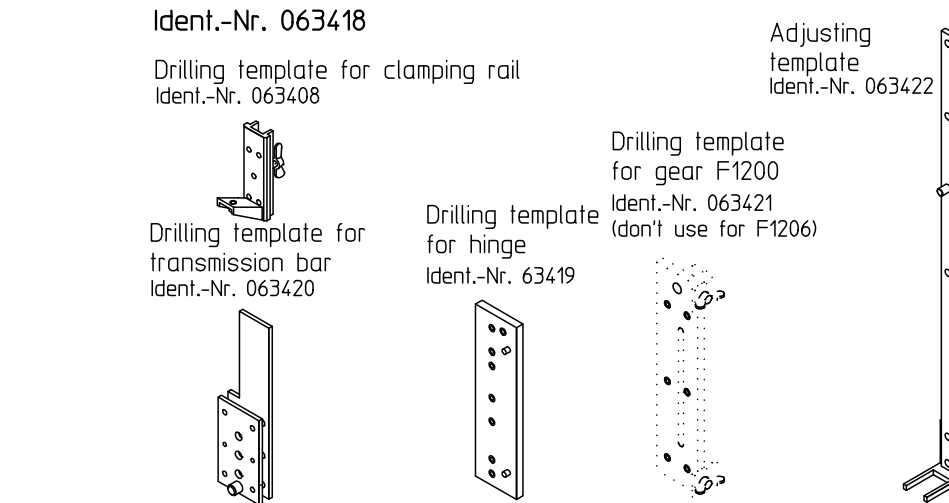


2.9 Insert gear through the recess in the driver. By sliding the central lock closure, align the gear to the fastening drill holes. Screw on gear (18).

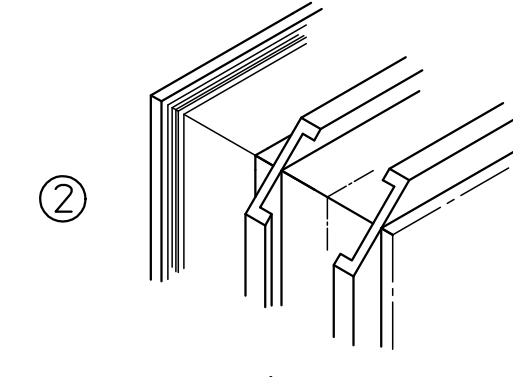
2.10 Check central locking with gear for function!

Getriebe F 1030/
 Getriebe F 1033 lockable

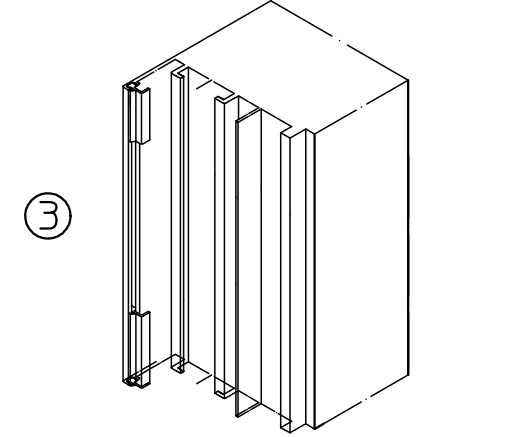
1.4 Drilling template set F1200, 5 pieces



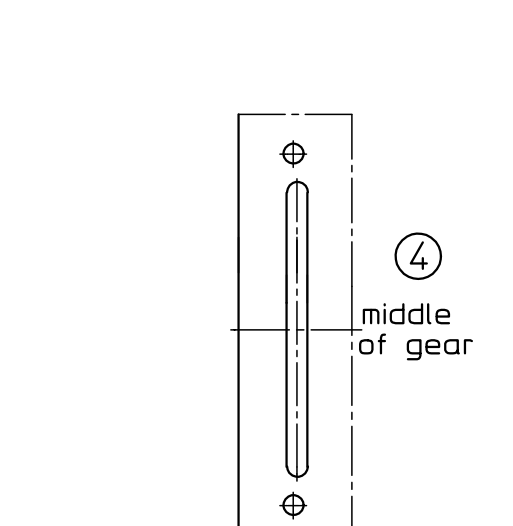
1.5 Break open transmission bar channel in all 4 casement corners (2).



1.6 Aspirate seal on casement side and work off in hinge area (3).

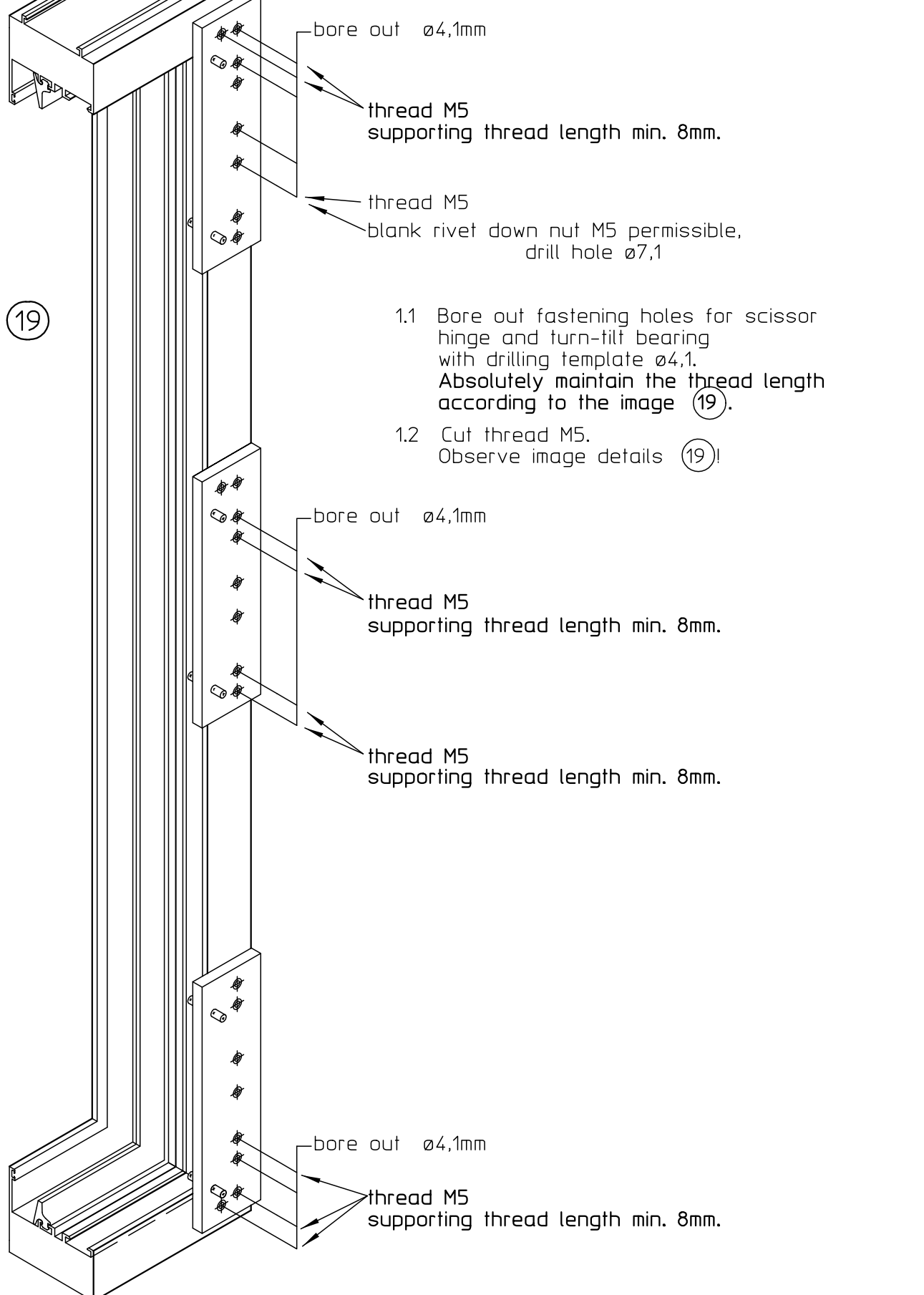


1.7 Mill slot for transmission carrier of gear (4).



III. Mounting at frame

1. Mechanical Operations



1.1 Bore out fastening holes for scissor hinge and turn-tilt bearing with drilling template $\varnothing 4,1$. Absolutely maintain the thread length according to the image (19).

1.2 Cut thread M5. Observe image details (19)

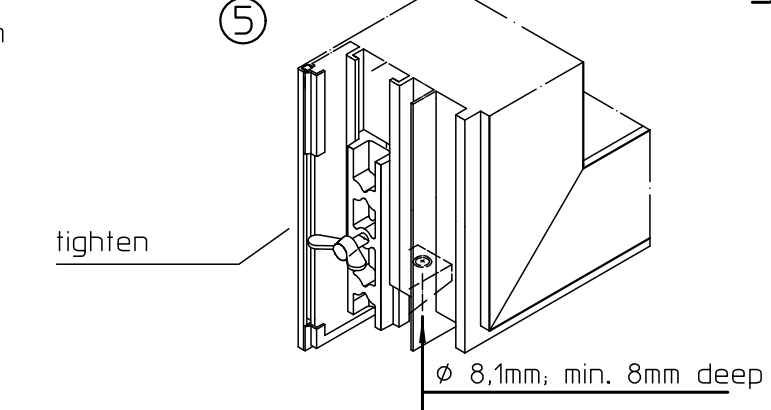
thread M5 supporting thread length min. 8mm.

thread M5 supporting thread length min. 8mm.

bore out $\varnothing 4,1\text{mm}$

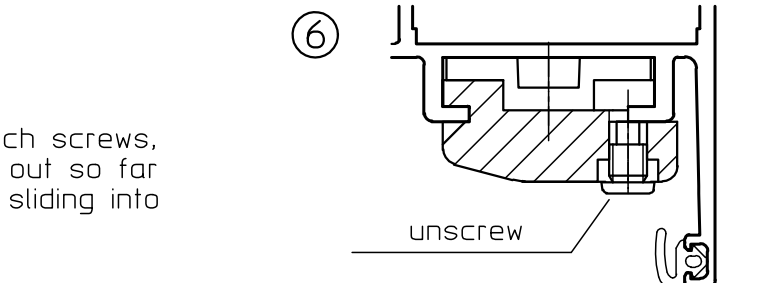
thread M5 supporting thread length min. 8mm.

1.8 Drill hole for the mounting trunnion of the clamping rail $\varnothing 8,1\text{mm}$, min. 8mm deep (5).

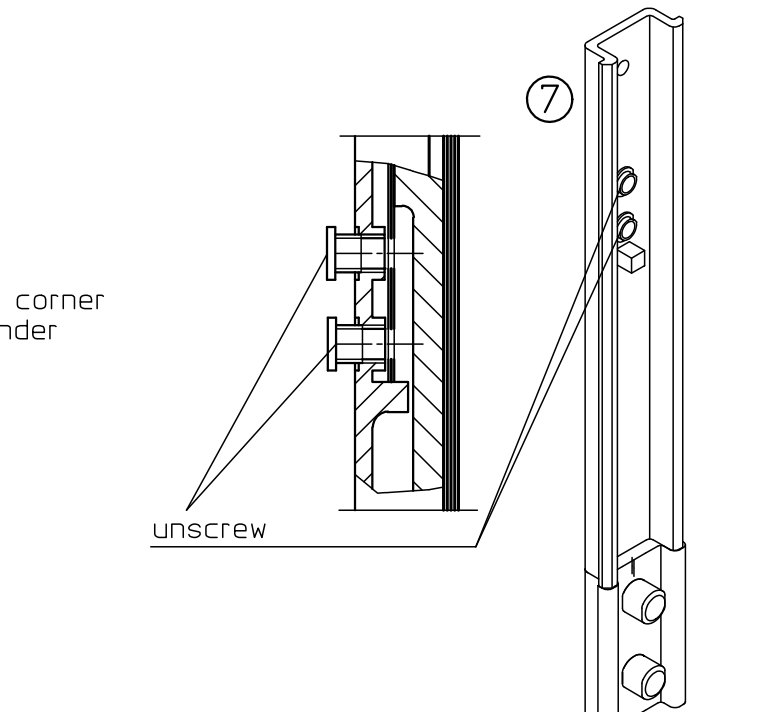


2. Mounting of fittings

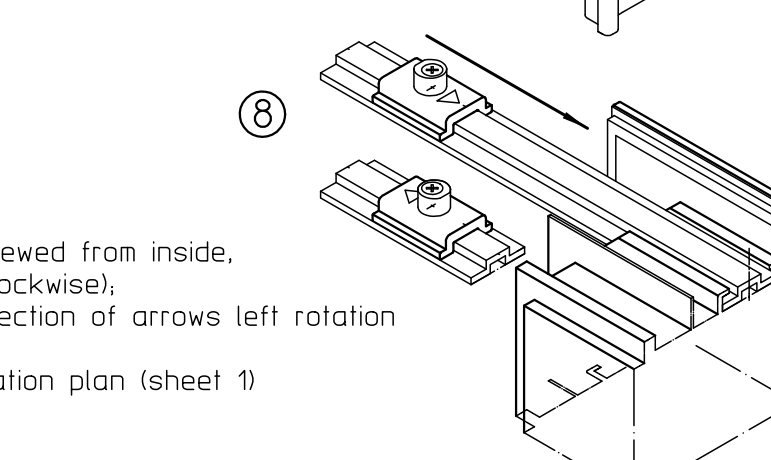
2.1 For fitting parts equipped with punch screws, the punch screws must be turned out so far that they do not hinder the parts sliding into the transmission bar guide (6).



2.2 For locking slides connected to a corner angle, the spring bolts may not hinder sliding the spring pad steel up to the limit stop (7).



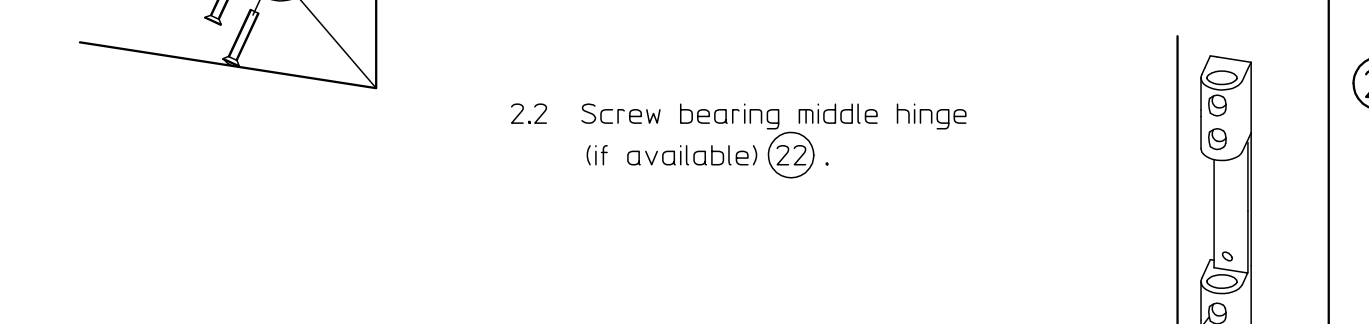
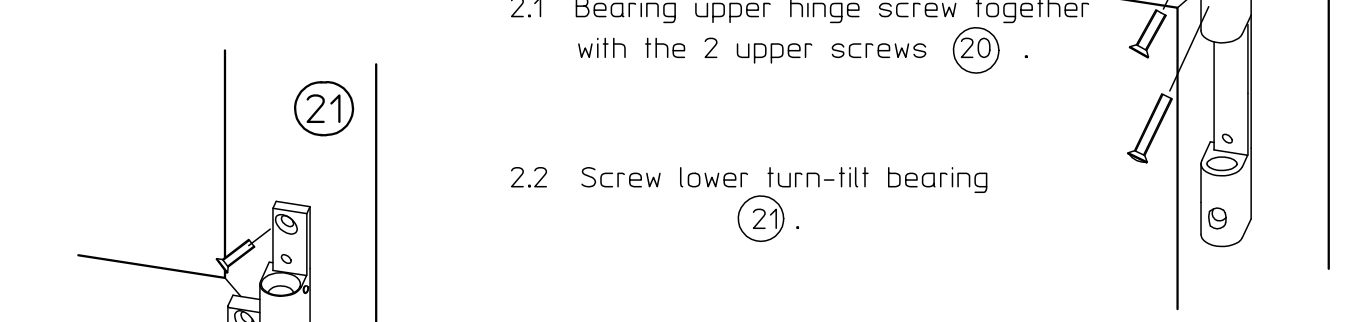
2.3 Mounting of locking piece (8): turn position, open direction right, viewed from inside, direction of arrows right rotation (clockwise); turn position, open direction left, direction of arrows left rotation (center clockwise); Direction of arrows see also installation plan (sheet 1)



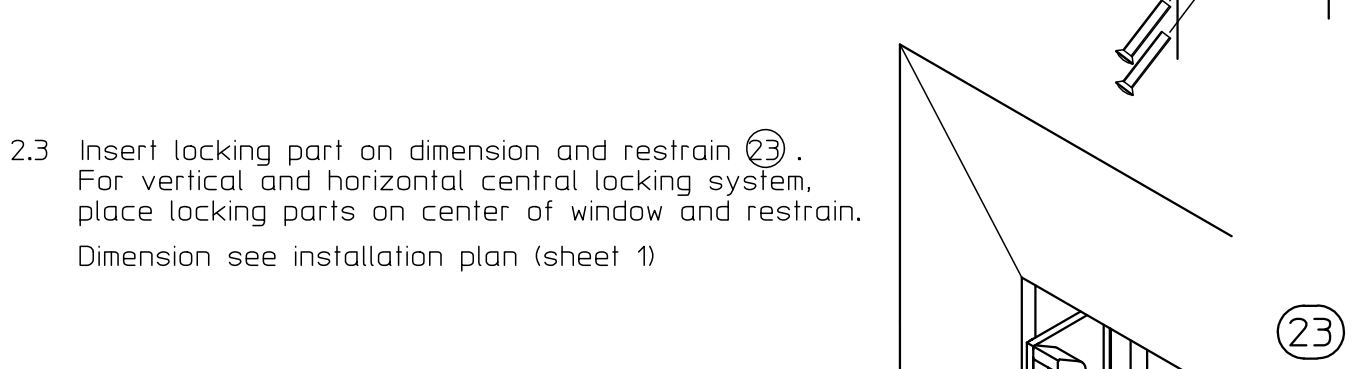
2. Mounting of fittings

2.1 Bearing upper hinge screw together with the 2 upper screws (20).

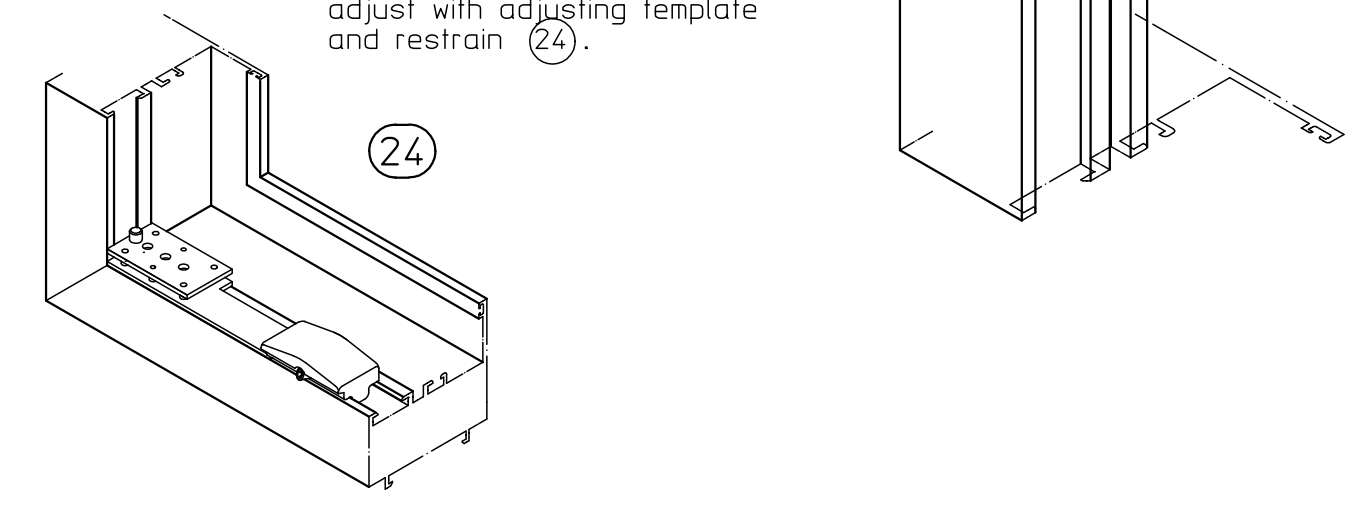
2.2 Screw lower turn-tilt bearing (21).



2.3 Insert locking part on dimension and restrain (23). For vertical and horizontal central locking system, place locking parts in center of window and restrain. Dimension see installation plan (sheet 1)

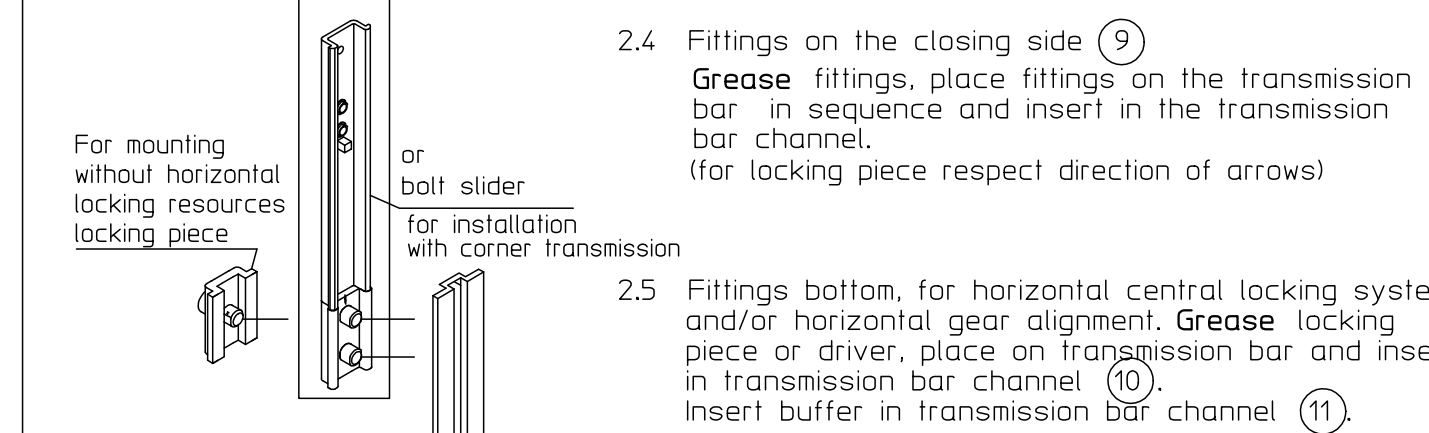


Insert buffer support in lower frame corner, adjust with adjusting template and restrain (24).

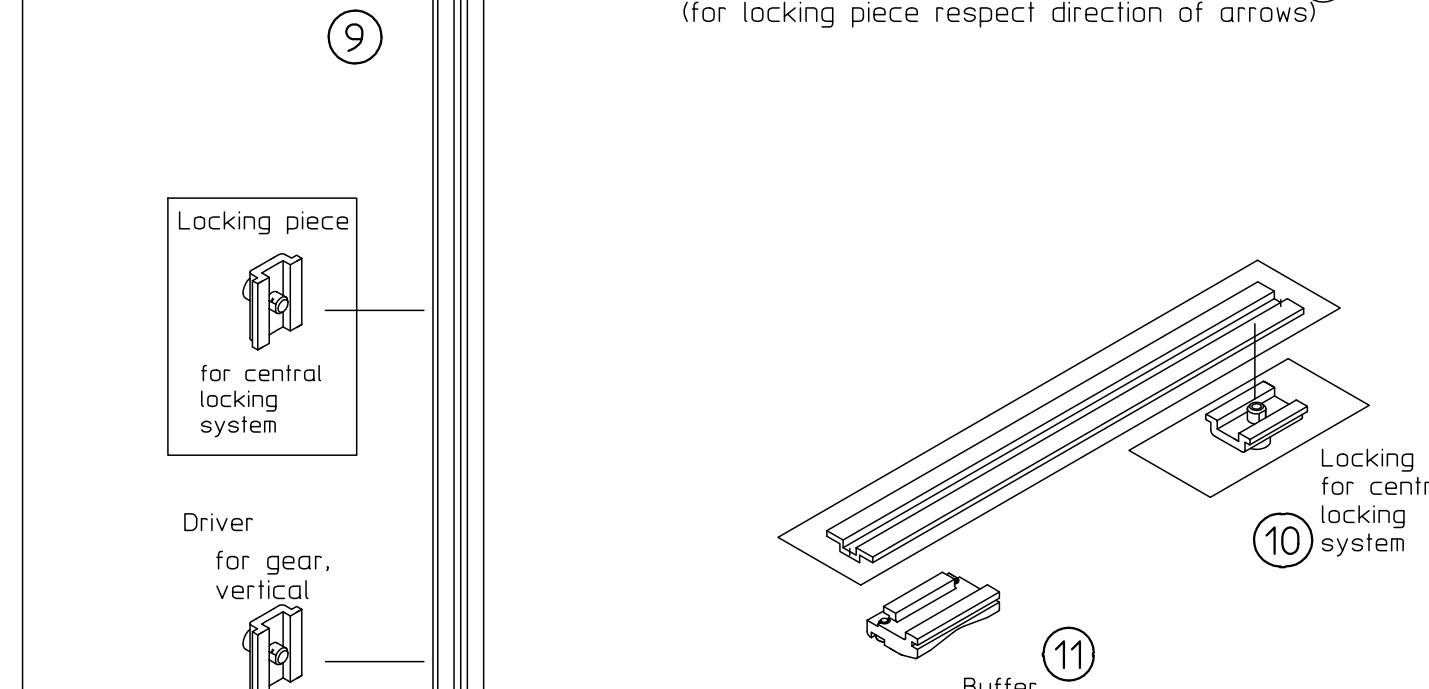


2.4 Fittings on the closing side (9)

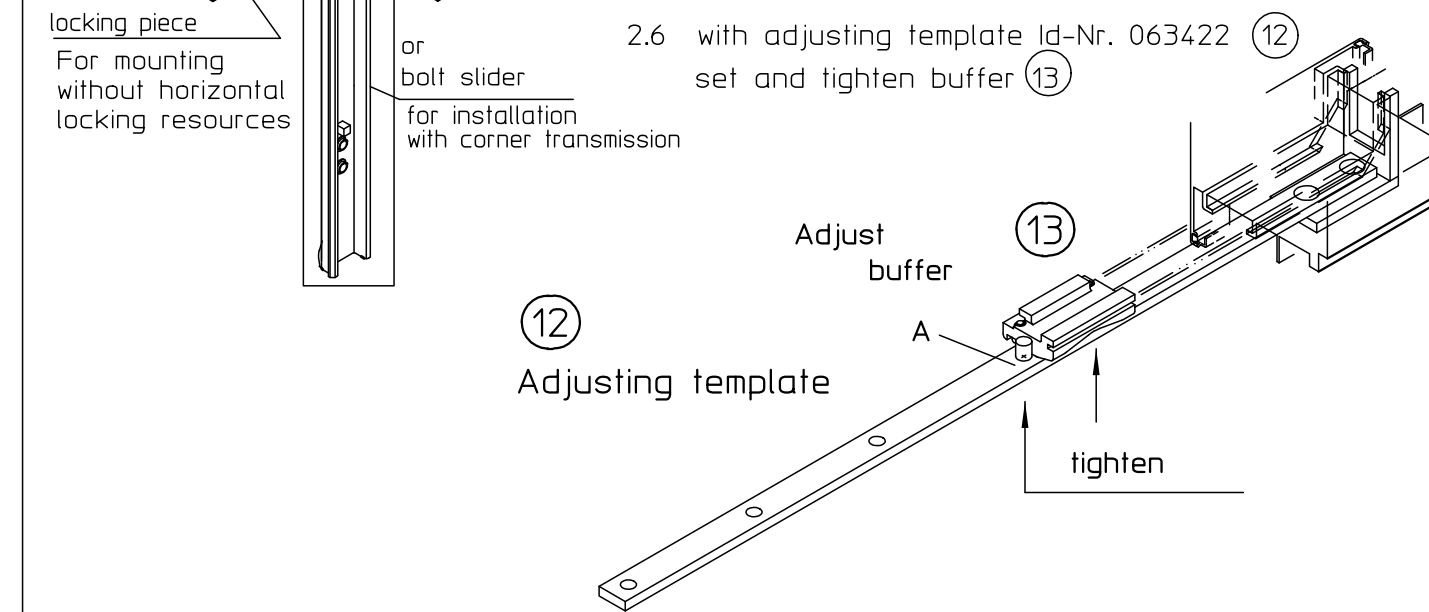
Grease fittings, place fittings on the transmission bar in sequence and insert in the transmission bar channel. (for locking piece respect direction of arrows)



2.5 Fittings bottom, for horizontal central locking system, and/or horizontal gear alignment. Grease locking piece or driver, place on transmission bar and insert in transmission bar channel (10). Insert buffer in transmission bar channel (11) (for locking piece respect direction of arrows)



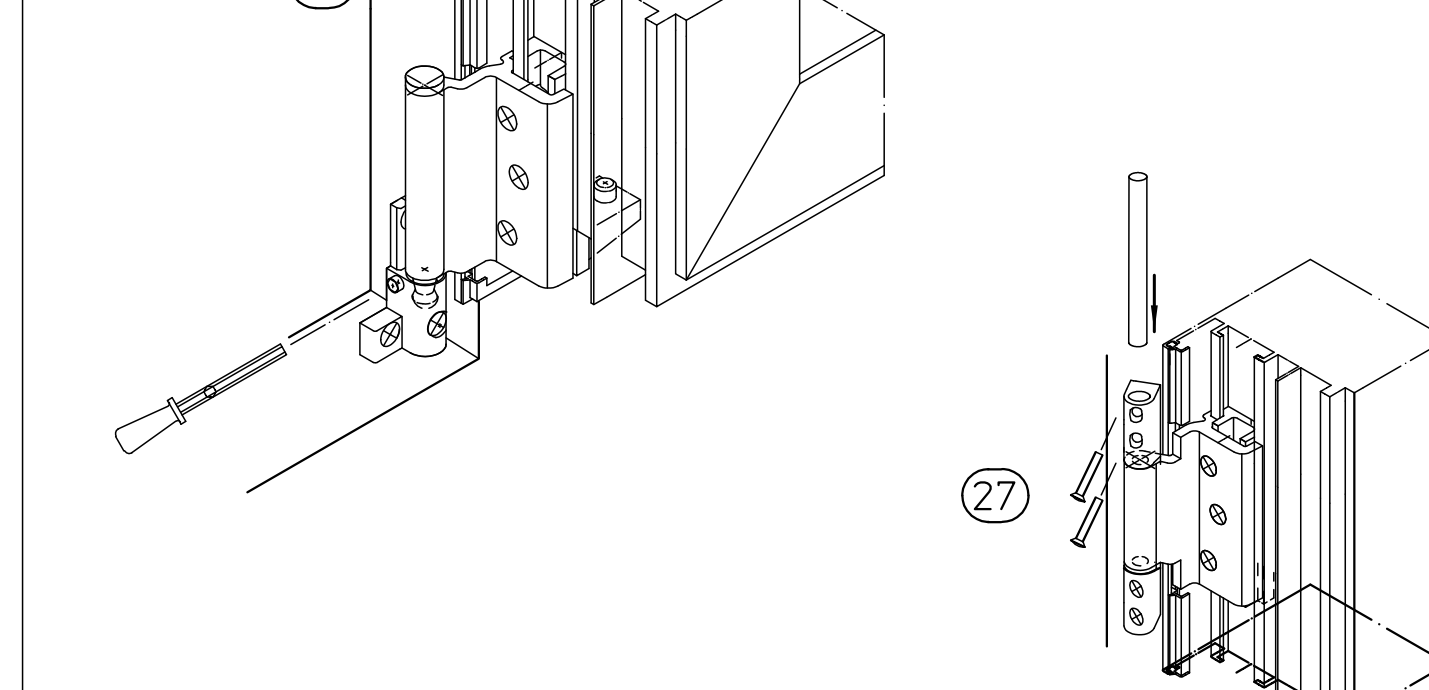
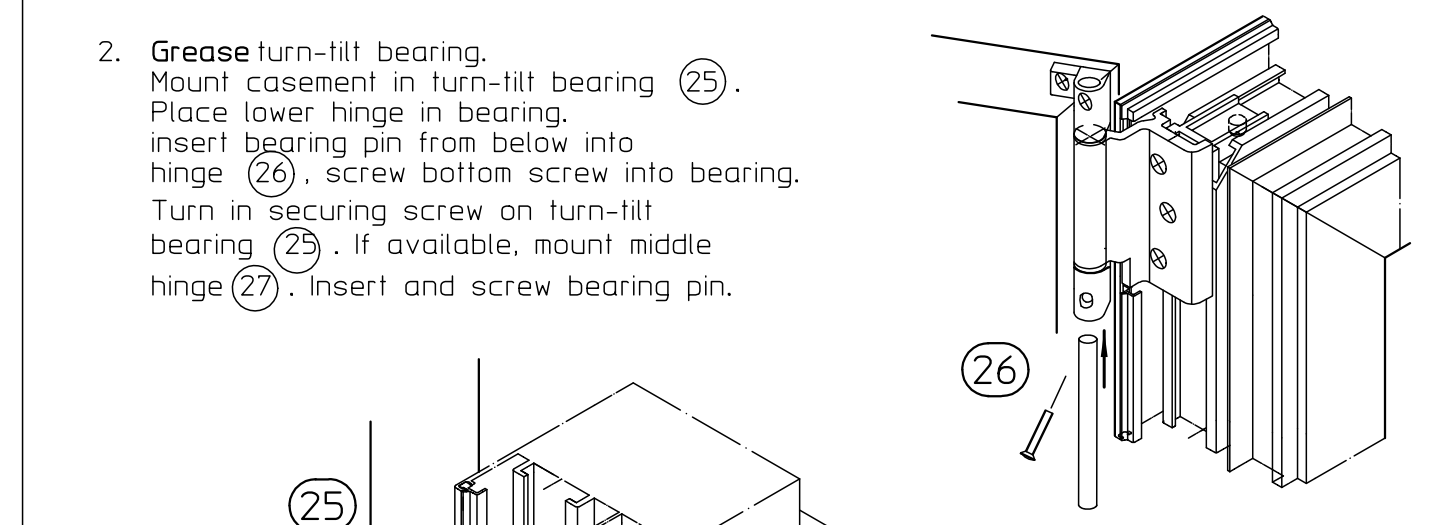
2.6 with adjusting template Id-Nr. 063422 set and tighten buffer (13)



IV. Casement and framework works

1. Bring gear in turning position.

2. Grease turn-tilt bearing. Mount casement in turn-tilt bearing (25). Place lower hinge in bearing, insert bearing pin from below into hinge (26), screw bottom screw into bearing. Turn in securing screw on turn-tilt bearing (25). If available, mount middle hinge (27). Insert and screw bearing pin.



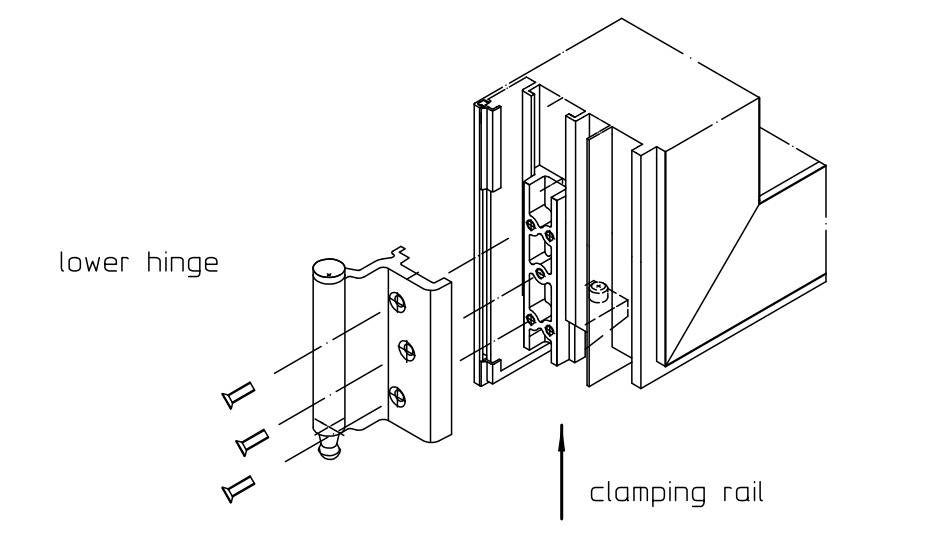
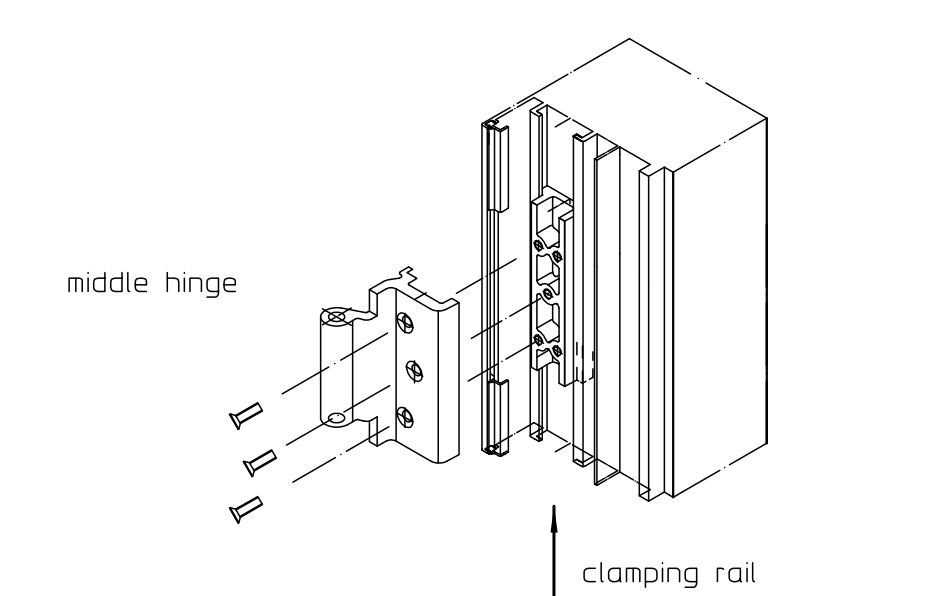
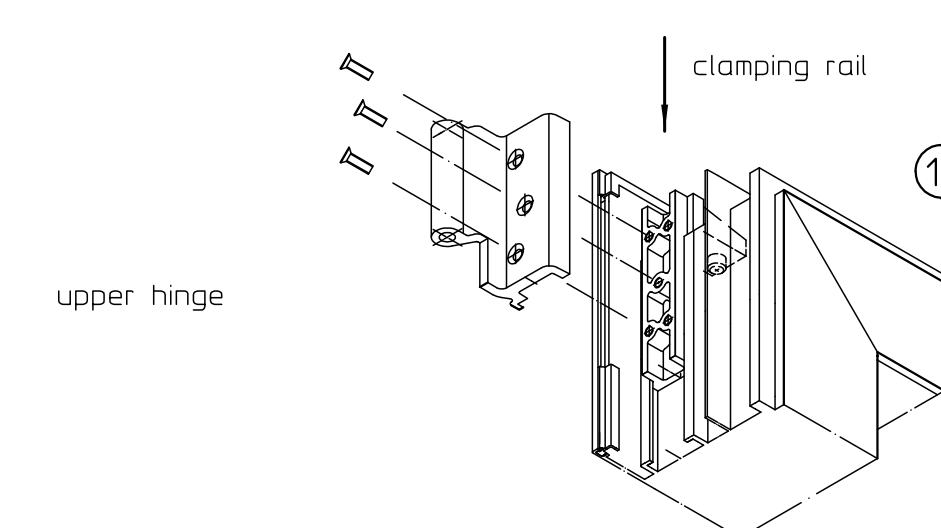
3. Check funktion of fitting, readjust locking parts and buffer support and scissory, if necessary.

V. Unmounting the casement

- Position window in turning position.
- When unmounting the casement, proceed in reverse sequence as in point IV.2.

2.7 Fittings on hinge side

Insert the upper and lower clamping rail in the rod groove until it stops. (First, if present, insert the middle clamping rail) Put hinges on slide rails and tighten (15).



Important

- When assembling and disassembling the hardware systems, the window has to be secured against tilting!
- Adhering to the locally applicable building codes in each case, as well as the generally applicable accident prevention rules and DIN standards must be guaranteed.
- All assembly works must therefore be carried out by qualified personnel. Window or metal builders
- Mounting drawing, assembly instructions, requirements for maintenance and operation must be followed.
- The specified range of applications must be maintained.
- The mounting dimensions must be observed.
- The required fixtures must be used.
- The free accessibility of the fittings for lubricating and maintenance must be guaranteed according to DIN 18357.
- If construction components of other manufacturers are used, GEZE will neither assume any liability for material quality and sufficient corrosion protection in accordance with the RAL quality assurance nor for possibly occurring damages and consequential losses.

Diese Zeichnung entspricht dem Entwicklungsstand des Zeichnungsdatums bzw. der letzten Änderungsveränderung. Aus der Benutzung der Zeichnung können keine Ansprüche, weder für materielle noch immaterielle Schäden, resultieren. Die Zeichnung stellt keine Garantie für die Richtigkeit der Angaben dar. Die Verantwortung für die Ausführung der Montage liegt bei dem Anwender. GEZE übernimmt keine Haftung für Schäden, die aus der Benutzung der Zeichnung resultieren. GEZE ist nicht haftbar für Schäden, die aus der Benutzung der Zeichnung resultieren. GEZE ist nicht haftbar für Schäden, die aus der Benutzung der Zeichnung resultieren. GEZE ist nicht haftbar für Schäden, die aus der Benutzung der Zeichnung resultieren.

GEZE GmbH P.O. Box 13 63 71224 Leonberg Germany		Bemerkung / description Mounting instructions Turn fitting F 1206 with gear F 1030 /F1033	
vertraulich / confidential	Blatt / page sheet / of 2 / 2	Profil-Nr. _____	
Erstellt / drawn gear. / checked	25/11/14 10/14	Skala / scale 1:1	
02	Zs/TK	10/14	*
01	Zs/TK	10/14	49209
Erstellt durch Erstellt durch	Sprache / language GB		
Zeichnungs-Nr. / document-no. 50940-EP-001			