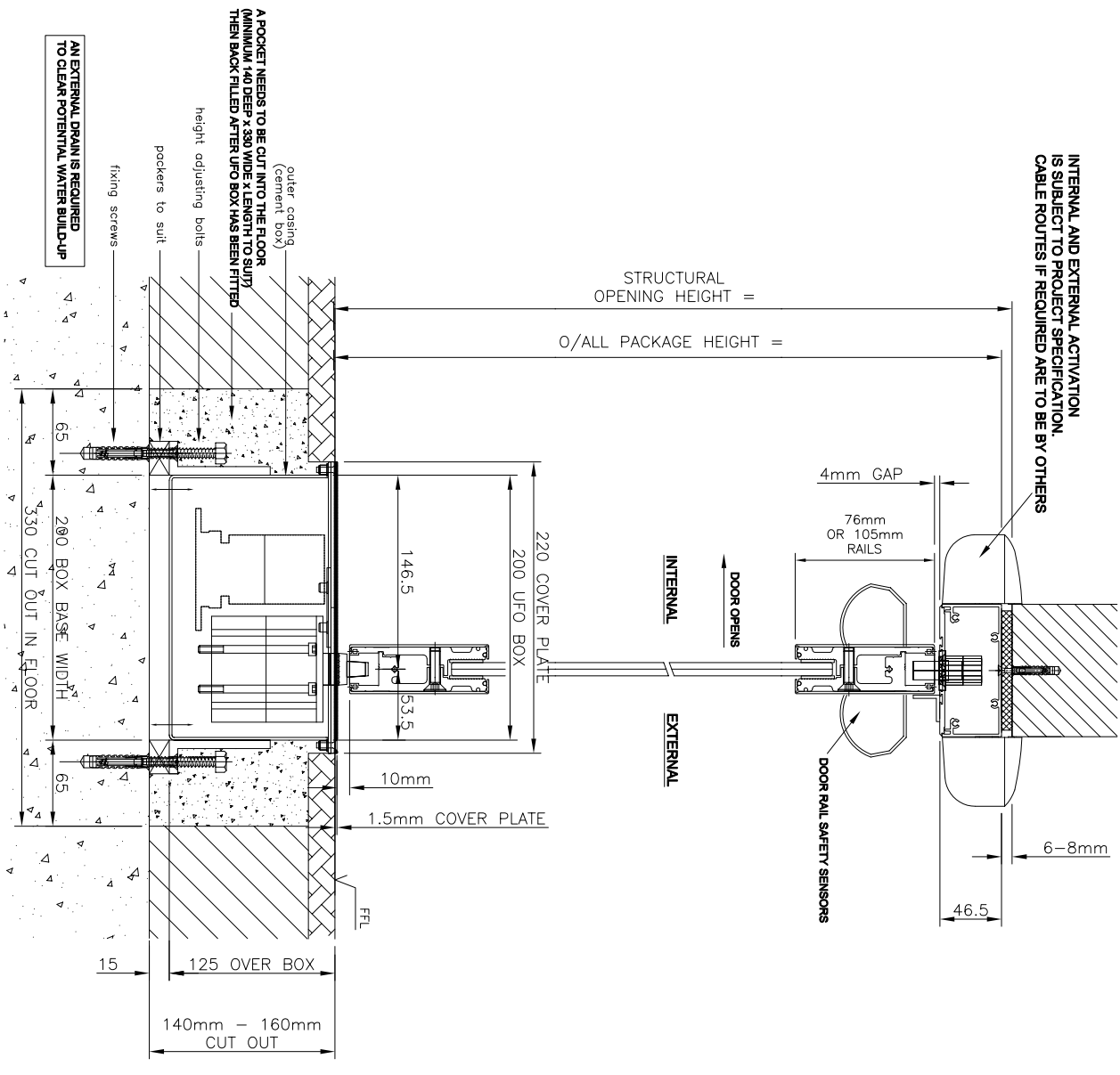


BARRIERS MAY BE REQUIRED

a) TO SAFEGUARD AGAINST PEDESTRIAN TRAFFIC APPROACHING FROM THE SIDE INTO THE SWEEP AREA (OPENING AND CLOSING) OF THE SWING DOOR.

b) TO DIRECT PEDESTRIAN TRAFFIC TOWARDS THE DOORWAY OPENING

PLEASE NOTE BARRIERS SHOULD BE POSITIONED IN SUCH A WAY THAT THEY DO NOT CAUSE AN OBSTRUCTION, OR INHIBIT MEANS OF ESCAPE OR REDUCE THE CLEAR OPENING.



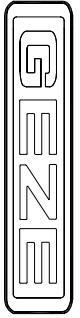
INTERNAL AND EXTERNAL ACTIVATION IS SUBJECT TO PROJECT SPECIFICATION. CABLE ROUTES IF REQUIRED ARE TO BE BY OTHERS

PROJECT SPECIFIC DETAILS

PROJECT :	
FINISH :	
GLASS :	
LOCKING :	
CONTROLS :	
ACTIVATION :	
SAFETY :	

Revision	Drawn	Date	Reason for Change
A	GH	11/5/10	UFO BOX FLOOR FIXING ANGLES REVISED

Drawing No.	UFO-01
Title	UFO OPERATOR - Pair Inward Opening with All Glass 'Ap' doors & aluminium goal-post frame



Drawn	GH	Appd	NTS	Scale	AUG 08	Date
GEZE UK Ltd Blenheim Way Fradley Park Lichfield Staffordshire, FAX 01543 443000			www.geze.com TEL 01543 443000 WS13 8SY			

This drawing shows the actual stage of product development in the data indicated. It is not intended for construction purposes. An approved drawing is required for the construction of the door. The drawing remains the property of GEZE and is not to be used without the express consent of GEZE.