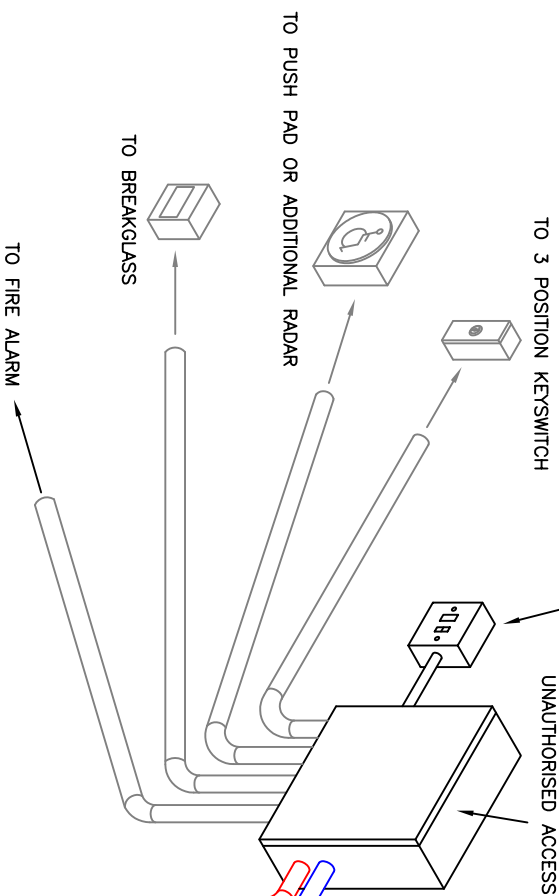


A SINGLE PHASE 240V, 10A FUSED SPUR IS REQUIRED ADJACENT TO THE CONTROL ENCLOSURE, AND MUST BE PROTECTED WITH A 30mA RESIDUAL CURRENT CIRCUIT BREAKER DEVICE, CONFORMING TO BS 4293:1983

OPTIONAL CONNECTIONS (IF REQ'D)



IMPORTANT NOTES

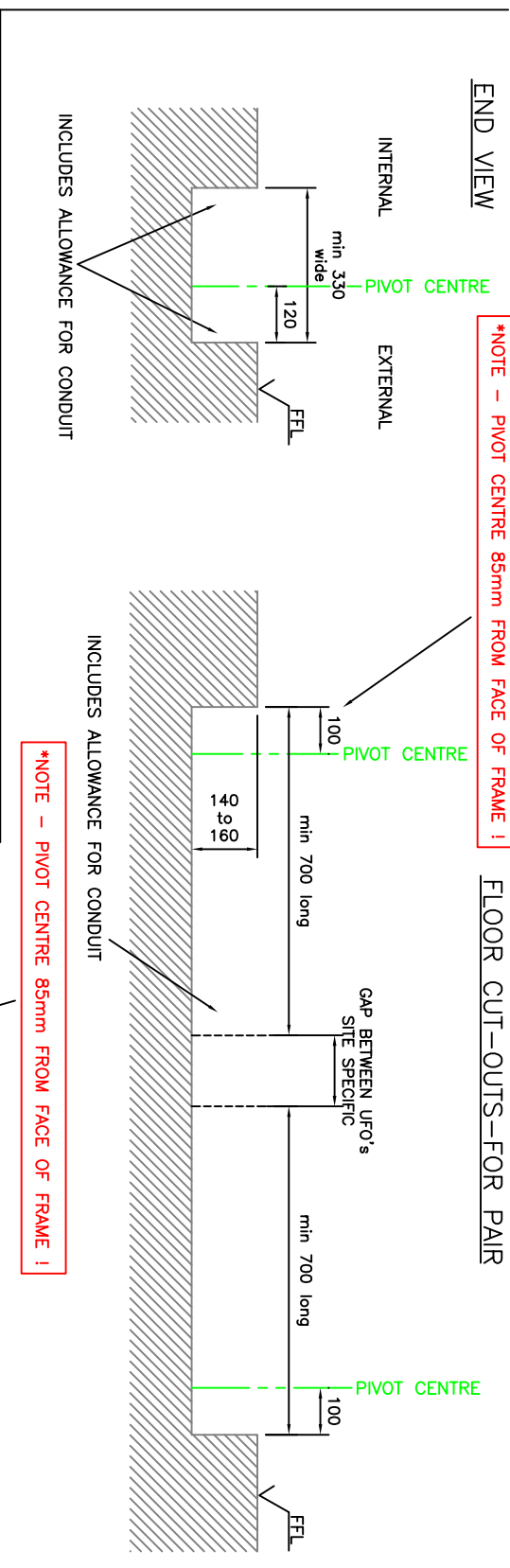
2no 25mm CONDUITS ARE REQUIRED FROM THE CONTROL ENCLOSURE BOX TO THE DRIVE CEMENT BOX, THESE SHOULD BE INSTALLED BY THE ELECTRICAL CONTRACTOR, TOGETHER WITH THOSE INSTALLING THE CEMENT BOX. ALL CABLES ARE TO BE RUN BY OTHERS (TO COMPLY WITH IEE 16/17th EDITION RECS - CABLES OF DIFFERING VOLTAGES SHOULD BE INSULATED & SEPARATED)

DEPENDING ON THE APPLICATION SOME OR ALL OF THE FOLLOWING CONTAINMENT WILL BE REQUIRED FROM THE CONTROL ENCLOSURE BOX TO THE:

- .PROGRAM SWITCH
- .ACTIVATION DEVICES SUCH AS PUSH BUTTON OR RADAR
- .FIRE ALARM INTERFACE
- .RE-SETTABLE BREAK GLASS

FOR PAIRS - 2no 25mm CONDUITS NEED BE SUPPLIED & FITTED BETWEEN THE 2 BOXES

WHERE AN INTERFACE TO THE FIRE ALARM IS REQUIRED, THE SIGNAL CABLING FROM THE FIRE ALARM SYSTEM MUST BE BROUGHT TO THE CONTROL ENCLOSURE BOX LOCATION. THE FIRE ALARM CONTACT SHOULD BE A NORMALLY OPEN VOLT FREE CONTACT.



ACTIVATION & SAFETY - CONDUIT & DRAW WIRES BY OTHERS

CABLES REQUIRED IN THIS 25mm DIAMETER CONDUIT

- 1 No 8 CORE FOR SAFETY SENSOR - CABLES SUPPLIED BY GEZE (2 for PAIR)
- 1 No 8 CORE FOR ACTIVATION SENSOR - CABLES SUPPLIED BY GEZE (2 for PAIR)
- 1 No 8 CORE FOR ADDITIONAL CAMS, CABLES SUPPLIED BY GEZE (2 for PAIR)

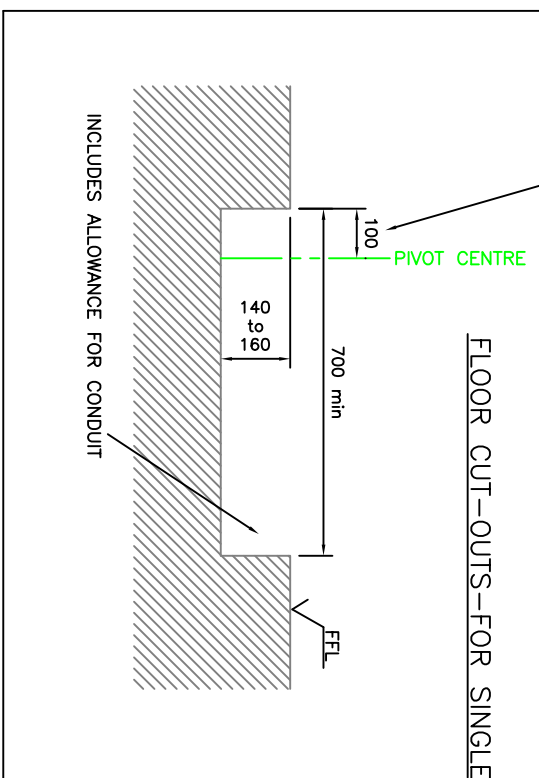
NOTE ALL CABLES ARE TO BE RUN INTO ONE BOX

FOR ACTIVATION & SAFETY

A MINIMUM OF 5 METRES OF THE FOLLOWING CABLES ARE TO BE LEFT BY GEZE COILED AT THE EDGE OF THE STRUCTURAL OPENING PRIOR TO INSTALLATION

CABLE TYPE: STRANDED CABLE REF: 7/0.22

- 1 No 8 CORE CABLES FOR RADARS (IF PUSH PADS ARE FITTED, 1 No CABLE WILL NEED TO BE RUN TO PUSH PAD LOCATIONS)
- 1 No 8 CORE CABLE FOR DOOR SAFETY SENSORS

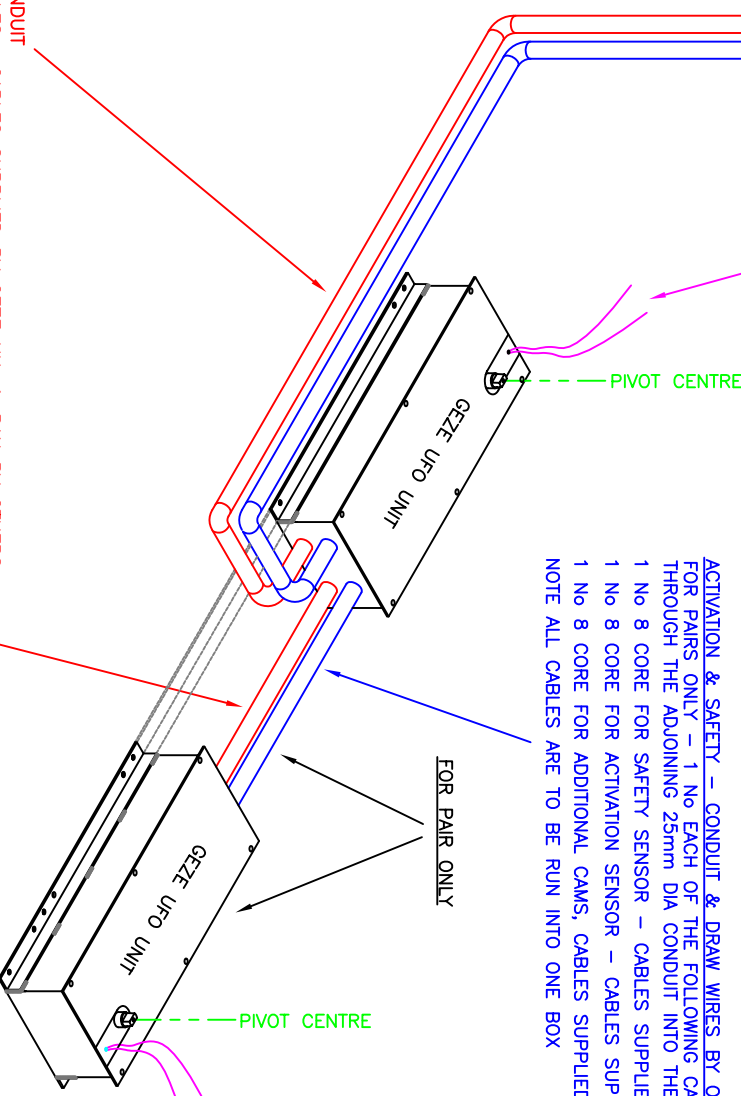


MAINS - CONDUIT BY OTHERS

CABLES REQUIRED IN THIS 25mm DIAMETER CONDUIT

- 2 No 4 CORE 1.5mm FLEX MAINS POWER CABLES,

NOTE BOTH CABLE ARE TO BE RUN INTO ONE BOX



MAINS - CONDUIT & DRAW WIRES BY OTHERS

FOR PAIRS ONLY - 1 MAINS CABLES IS TO BE RUN THROUGH THE ADJOINING 25mm DIA CONDUIT INTO THE SECOND BOX.

Revision	Drawn	Date	Reason for Change
D	GH	4-6-10	PIVOT CENTRE CLARIFIED AS 85mm
C	GH	11-5-10	FLOOR CUT OUT NOW 140-160mm
B	GH	01-02-10	CONDUITS RUN DOWN SIDE OF BOX
A	GH	21-01-10	LAYOUT REDRAWN



Drawing No. UFO CABLES - 01

Title UFO OPERATOR cable layouts

Drawn GH Appd NTS Scale NTS Date AUG 08

www.geze.com

GEZE UK Ltd
Blenheim Way
Fradley Park
Lichfield
Staffordshire. TEL 01543 443000
WS13 8SY FAX 01543 443001

The drawings shown are the property of Geze and shall not be reproduced or used in any way without the written permission of Geze. This drawing may not be copied or modified in any way without the express written consent of Geze.