

TS 3000B Standard guide rail

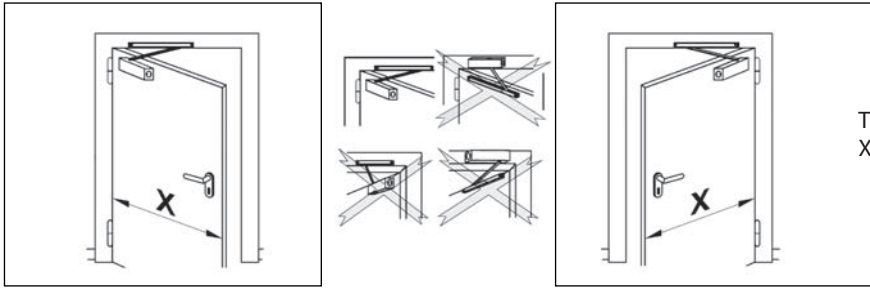
GB Mounting instructions

TS 3000B Guide rail with electromechanical hold-open device

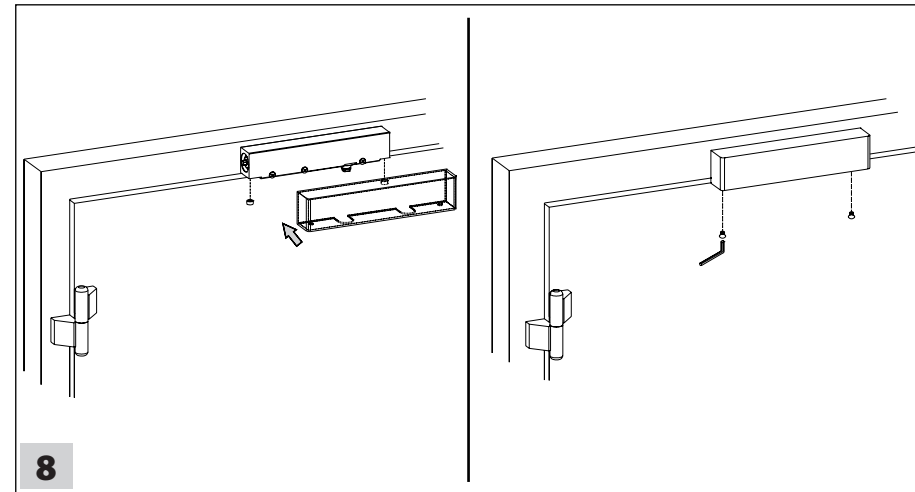
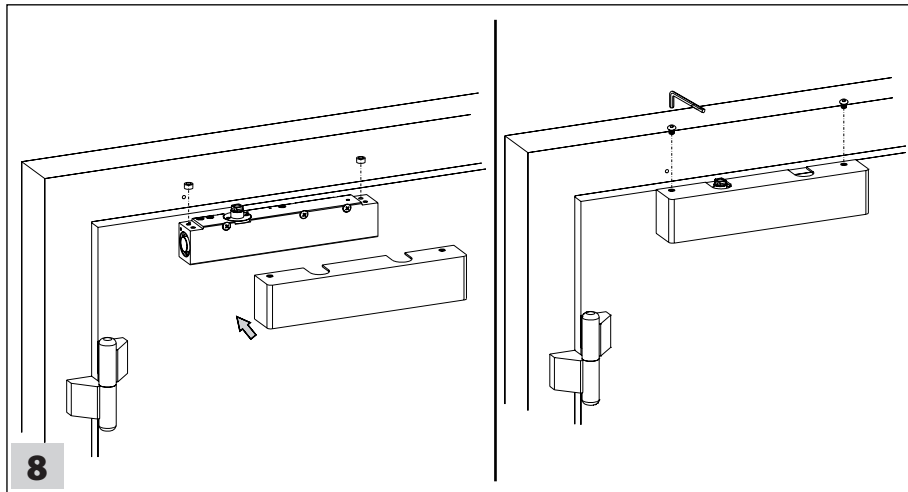
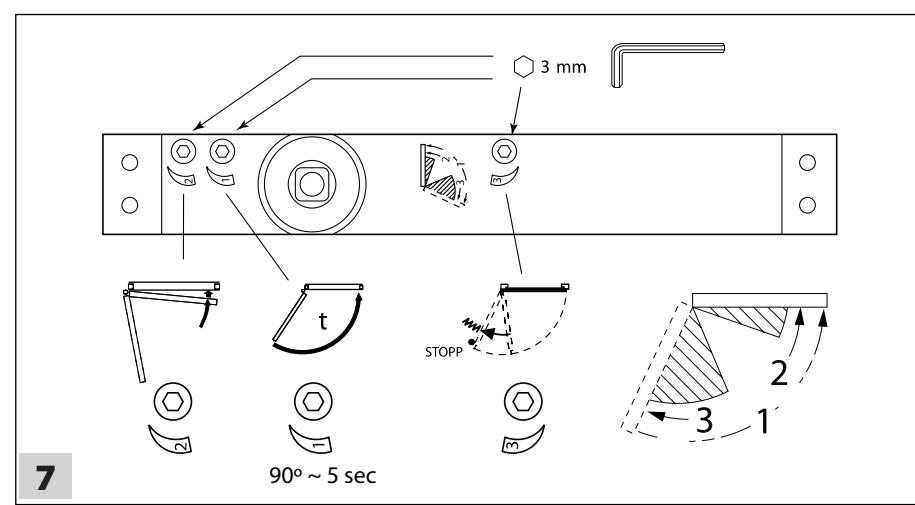
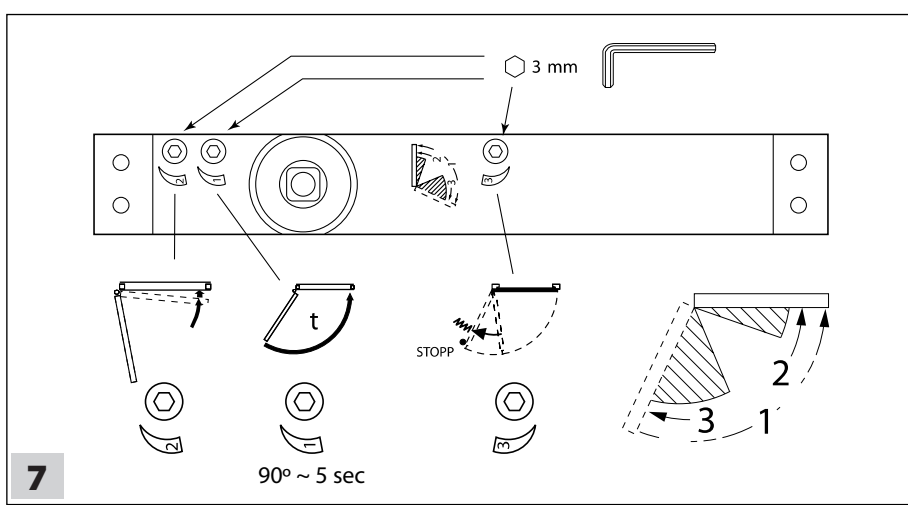
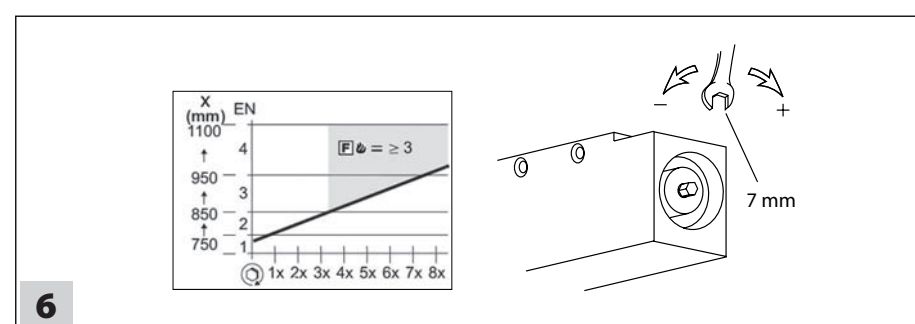
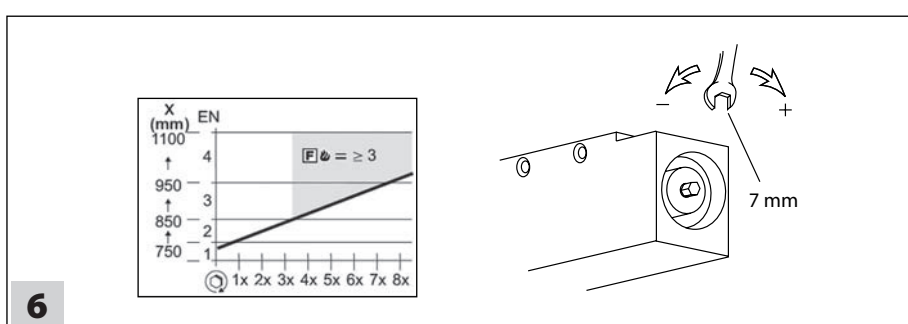
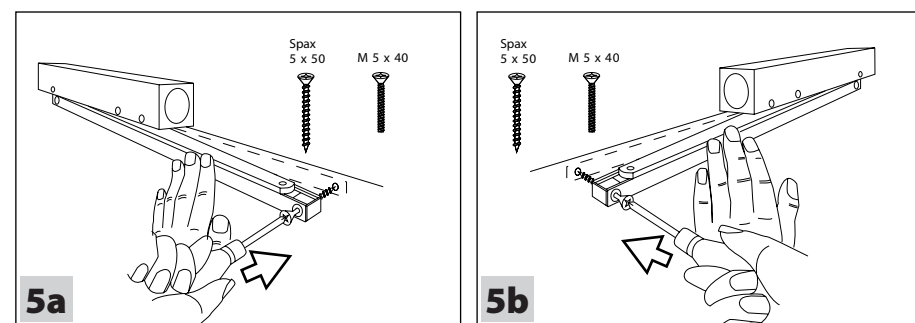
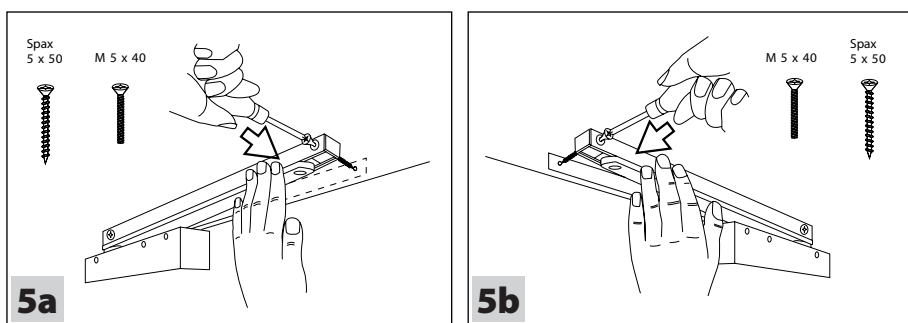
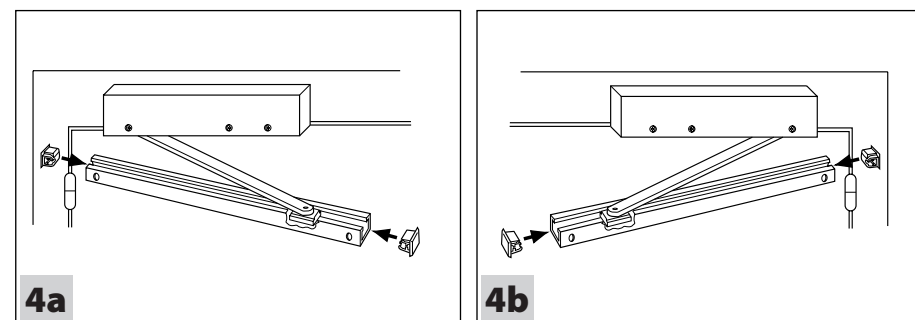
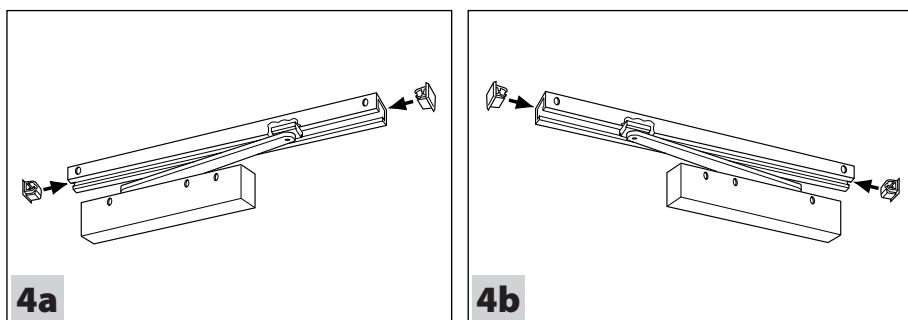
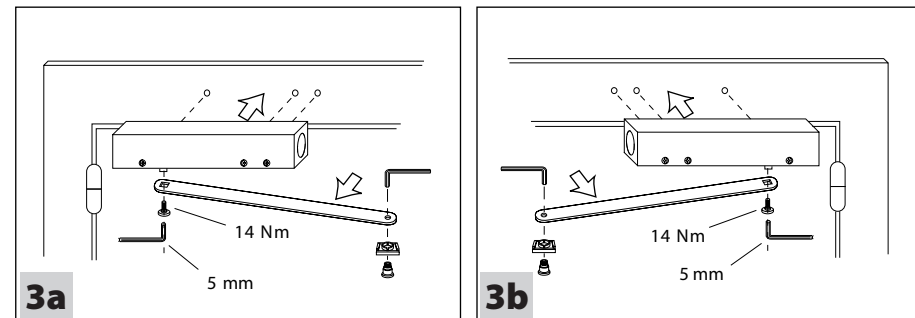
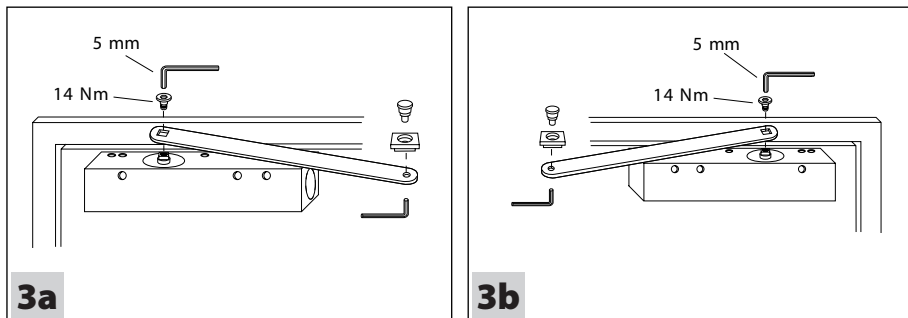
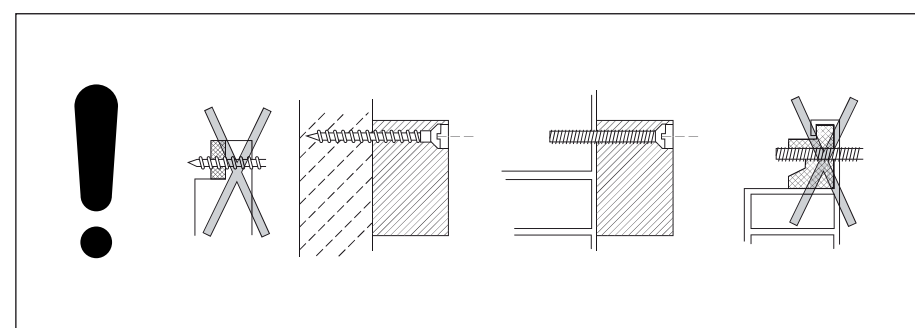
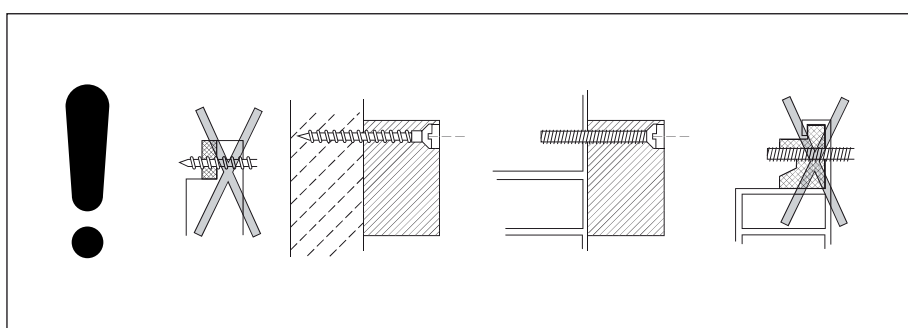
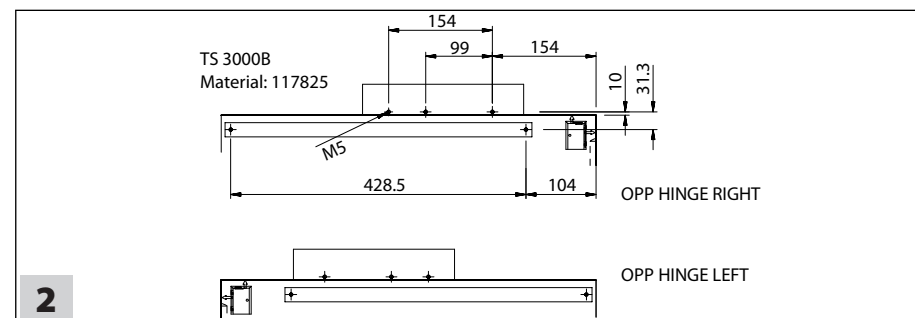
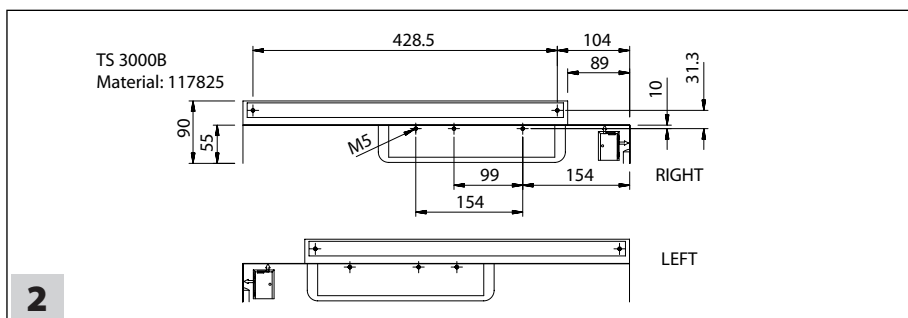
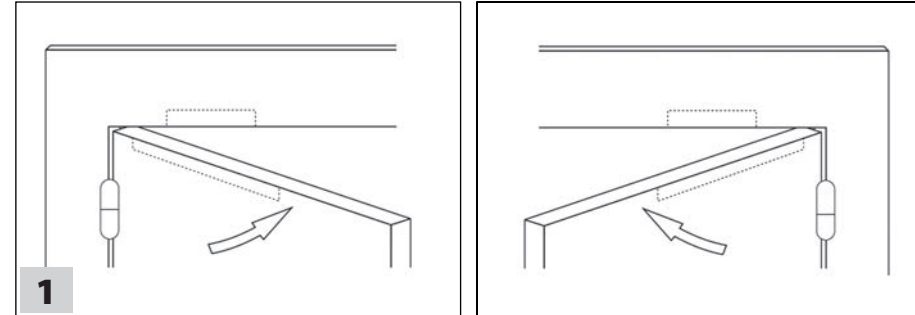
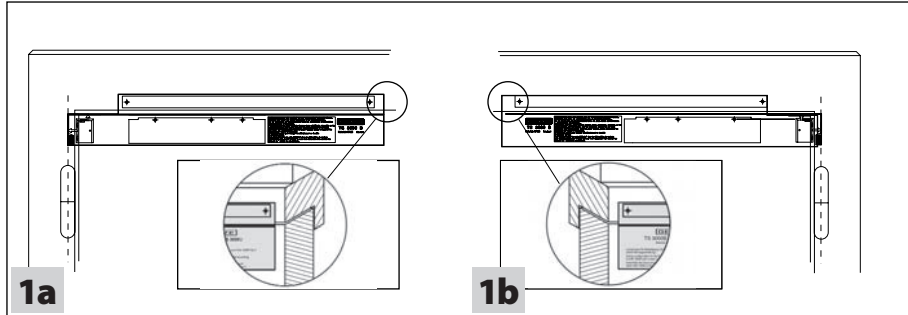
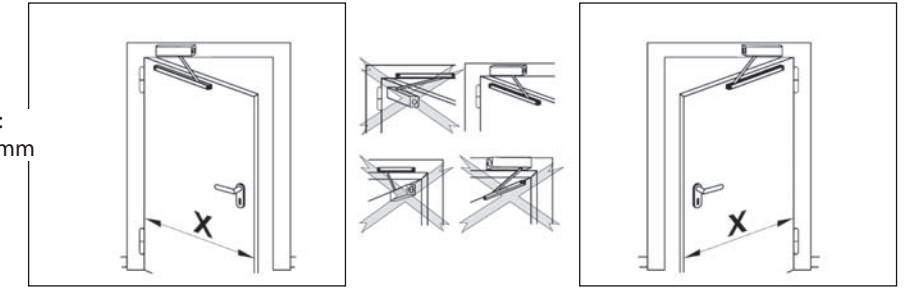
117807-05



1 TS 3000B Standard guide rail



TS 3000B:
X ≤ 1100 mm



Germany
GEZE GmbH
Niederlassung Süd-West
Tel. +49 (0) 7152 203 594
E-Mail: leonberg.de@geze.com
GEZE GmbH
Niederlassung Süd-Ost
Tel. +49 (0) 7152 203 6440
E-Mail: muenchen.de@geze.com
GEZE GmbH
Niederlassung Ost
Tel. +49 (0) 7152 203 6840
E-Mail: berlin.de@geze.com
GEZE GmbH
Niederlassung Mitte/Luxemburg
Tel. +49 (0) 7152 203 6888
E-Mail: frankfurt.de@geze.com
GEZE GmbH
Niederlassung West
Tel. +49 (0) 7152 203 6770
E-Mail: duesseldorf.de@geze.com
GEZE GmbH
Niederlassung Nord
Tel. +49 (0) 7152 203 6600
E-Mail: hamburg.de@geze.com

GEZE Service GmbH
Tel. +49 (0) 1802 923392
E-Mail: service-info.de@geze.com
Austria
GEZE Austria
E-Mail: austria.at@geze.com
www.geze.at
Baltic States
GEZE GmbH Baltic States office
E-Mail: office-latvia@geze.com
www.geze.com
Benelux
GEZE Benelux B.V.
E-Mail: benelux.nl@geze.com
www.geze.be
www.geze.nl
Bulgaria
GEZE Bulgaria - Trade
E-Mail: office-bulgaria@geze.com
www.geze.bg

China
GEZE Industries (Tianjin) Co., Ltd.
E-Mail: chinasales@geze.com.cn
www.geze.com.cn
GEZE Industries (Tianjin) Co., Ltd.
Branch Office Shanghai
E-Mail: chinasales@geze.com.cn
www.geze.com.cn
GEZE Industries (Tianjin) Co., Ltd.
Branch Office Guangzhou
E-Mail: chinasales@geze.com.cn
www.geze.com.cn
GEZE Industries (Tianjin) Co., Ltd.
Branch Office Beijing
E-Mail: chinasales@geze.com.cn
www.geze.com.cn
France
GEZE France S.A.R.L.
E-Mail: france.fr@geze.com
www.geze.fr
Hungary
GEZE Hungary Kft.
E-Mail: office-hungary@geze.com
www.geze.hu

Iberia
GEZE Iberia S.R.L.
E-Mail: info@geze.es
www.geze.es
India
GEZE India Private Ltd.
E-Mail: office-india@geze.com
www.geze.in
Italy
GEZE Italia S.r.l.
E-Mail: italia.it@geze.com
www.geze.it
GEZE Engineering Roma S.r.l.
E-Mail: roma@geze.biz
www.geze.it
Poland
GEZE Polska Sp.z o.o.
E-Mail: geze.pl@geze.com
www.geze.pl
Romania
GEZE Romania S.R.L.
E-Mail: office-romania@geze.com
www.geze.ro

Russia
OOO GEZE RUS
E-Mail: office-russia@geze.com
www.geze.ru
Scandinavia Sweden
GEZE Scandinavia AB
E-Mail: sverige.se@geze.com
www.geze.se
Scandinavia Norway
GEZE Scandinavia AB avd. Norge
E-Mail: norge.se@geze.com
www.geze.no
Scandinavia Denmark
GEZE Danmark
E-Mail: danmark.se@geze.com
www.geze.dk
Singapore
GEZE (Asia Pacific) Pte. Ltd.
E-Mail: gezesea@geze.com.sg
www.geze.com
South Africa
GEZE South Africa (Pty) Ltd.
E-Mail: info@gezesa.co.za
www.geze.co.za

Switzerland
GEZE Schweiz AG
E-Mail: schweiz.ch@geze.com
www.geze.ch
Turkey
GEZE Kapi ve Pencere Sistemleri
E-Mail: office-turkey@geze.com
www.geze.com
Ukraine
LLC GEZE Ukraine
E-Mail: office-ukraine@geze.com
www.geze.ua
United Arab Emirates/GCC
GEZE Middle East
E-Mail: geze.me@geze.com
www.geze.ae
United Kingdom
GEZE UK Ltd.
E-Mail: info.uk@geze.com
www.geze.com

Symbols and means of representation

Important information and technical notes are emphasised in order to illustrate the correct operation.

Symbol	Meaning
	means "important note"
	means "additional information"
	Symbol for an action: Here you have to do something. ▶ Observe the sequence if there are several action steps.

Product liability

In accordance with the liability of the manufacturer for their products as defined in the German "Produkthaftungsgesetz" (Product Liability Act), the information contained in this brochure (product information and proper use, misuse, product performance, product maintenance, obligations to provide information and instructions) is to be observed. Non-compliance releases the manufacturer from its statutory liability.

2 TS 3000B

Guide rail with electromechanical hold-open device

2.1 General information

2.1.1 Product description

The guide rail system can electromechanically hold a door leaf in the open position.

2.1.2 Intended use

The system is designed solely for use in dry rooms.
Any other use than the proper use as well as all changes to the product are impermissible.

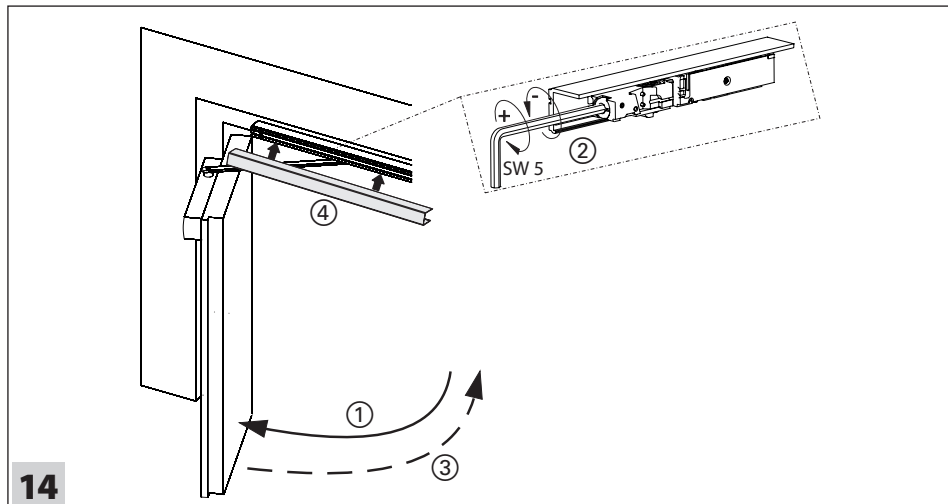
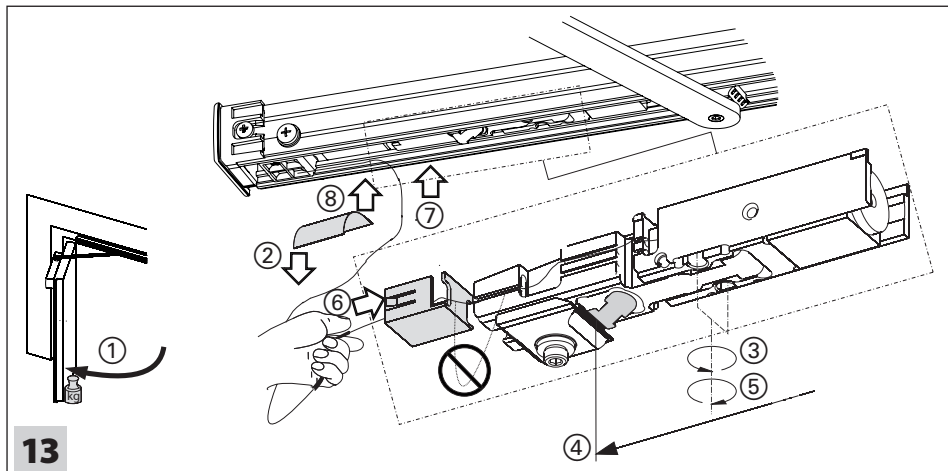
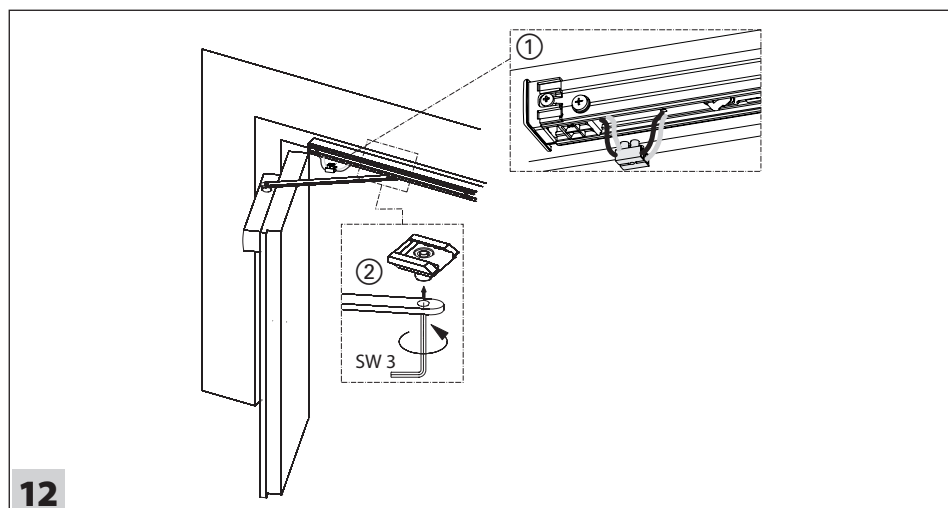
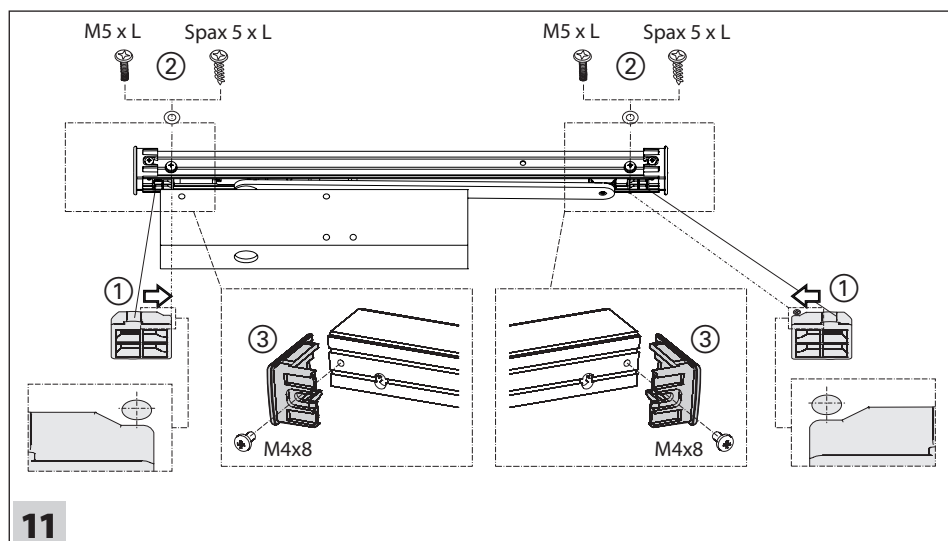
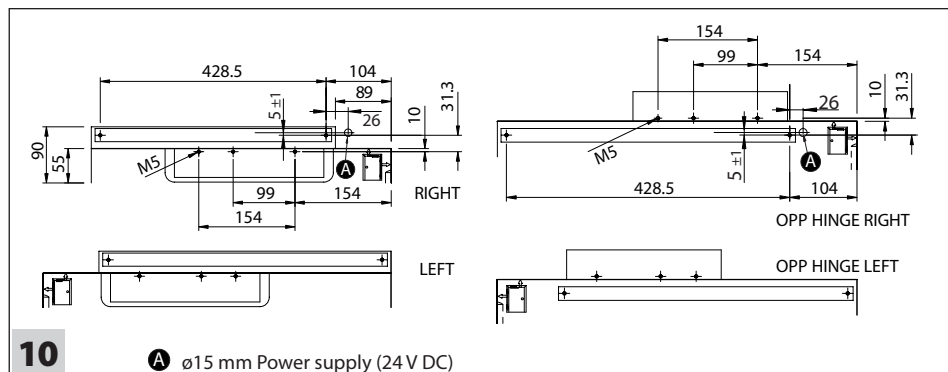
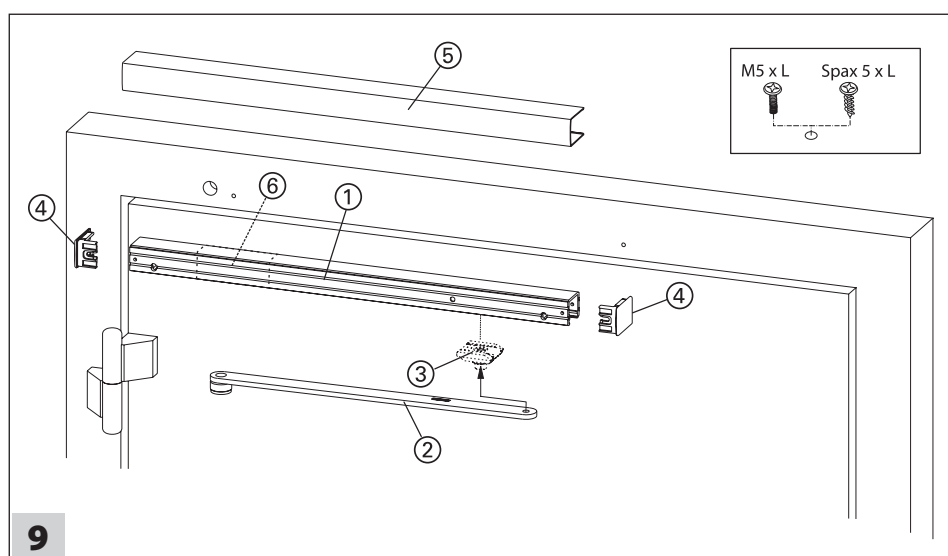
2.1.3 Limitation of liability

GEZE does not accept any liability for direct or indirect damage resulting from the non-observance of the specifications in these instructions of this product. Technical modifications that serve the improvement or further development of the product can be introduced at any time without any particular announcement.

GEZE shall not be liable for injuries or damage resulting from unauthorised modification of the system.

GEZE is not liable if products from other manufacturers are used with GEZE equipment. Only original GEZE parts may be used for repair and maintenance work as well.

Please do not hesitate to contact the GEZE customer service for further information.



2.1.4 Important information

The installation drawing, mounting instructions, maintenance and operating regulations have to be observed.

The specified range of application has to be observed.

The prescribed mounting dimensions have to be observed.

The prescribed means of fastening have to be used.

All the screws have to be tightened as shown in the drawings.

After mounting and before commissioning:

- ▶ Check the function.
- ▶ Tighten all the clamping screws again.
- ▶ Ensure free accessibility of the fittings for maintenance in accordance with DIN 18357.
- ▶ Make sure that an acceptance test is carried out by qualified and authorised personnel according to the applicable regulations.
- ▶ In case of fire or smoke protection doors, mount an acceptance test plate after the successful acceptance test.

2.2 Safety instructions

- ▶ The prescribed mounting, maintenance and repair work must be performed by properly trained personnel authorised by GEZE (see "GEZE user information for door closer").
- ▶ The country-specific laws and regulations must be observed during safety-related tests.
- ▶ In accordance with Machinery Directive 2006/42/EC, a risk analysis must be carried out and the system must be identified in accordance with CE Identification Directive 93/68/EEC before commissioning.
- ▶ Observe the latest versions of guidelines, standards and country-specific regulations, in particular:
 - BGR 232 "Guidelines for power-operated windows, doors and gates"
 - DIN 18650 "Building hardware - Powered pedestrian doors"
 - Accident-prevention regulations, in particular BGV A1 "General regulations"

2.2.1 Safety-conscious working

- ▶ Observe the safety instructions for electrical systems and in the wiring diagram.

- ▶ Protect the workplace against unauthorised entry.
- ▶ Take care to allow sufficient space for the movement of components in the system.
- Risk of injury when a drive is opened through sharp edges and moving parts (drawing in of hair, clothing, ...).
- Risk of injury by crushing, impact, shearing or drawing-in spots.

2.3 Technical data

Operating voltage	24 V DC ±15%
Current consumption	100 mA
Max. ripple permitted	30%

2.4 Description

Designations in fig. 9:

- 1 Guide rail
- 2 Sliding lever
- 3 Sliding block
- 4 End cap
- 5 Cover panel
- 6 Electromechanical hold-open device

2.5 Mounting the TS 3000B

2.5.1 Drilling pattern (fig. 10)

TS 3000B with E guide rail for direct fixing.

- ▶ Mark and drill the fixing holes for door closer and guide rail using the fitting template and cut the M5 thread if necessary.
- ▶ Drill additional bore holes with Ø15 mm for cable entry as shown in fig. 10.

2.5.2 Mounting the guide rail and end caps (fig. 11)

- ▶ Make sure that the cable connection faces to the side of the door leaf.

- ▶ Align spacers (1) at the guide rail.
- ▶ Fasten the mounting screws (2) of the guide rail with 2 Nm.
- ▶ Align and screw on the end caps (3).
- ▶ Fasten the door closer.

2.5.3 Connecting the 24 V power supply (fig. 12)

- ▶ Red = + (terminal 1)
- ▶ White = - (terminal 2)

- ▶ Connect the 24 V cable to the luster terminal (1).
- ▶ Connect the sliding lever (2) to the sliding block (tightening torque 5 Nm).

2.5.4 Adjusting the electromechanical hold-open device (fig. 13)

- ▶ Open door leaf (1) to desired open position and fix it there.
- ▶ Remove cable protection foil from guide rail (2).
- ▶ Loosen clamping screws (3) of electromechanical hold-open device.
- ▶ Move electromechanical hold-open device until catch contacts sliding block.
- ▶ Securely fasten electromechanical hold-open device with screws (5).
- ▶ To prevent loops, tighten cable and fasten cable protection at electromechanical hold-open device end (6).
- ▶ Place cable in cable protection and in upper cable chamber behind electromechanical hold-open device (7).
- ▶ Secure cable with cable protection foil (8).

2.5.5 Functional test of electromechanical hold-open device (fig. 14)

- ▶ Open door leaf (1) and engage it in the electromechanical hold-open device.
- ▶ Set the manual release force (2).

- ▶ Release force for door according to EN 1155:
 - 40...120 Nm in an open position of 90°

- ▶ De-energise the electromechanical hold-open device.
- The door leaf closes (3).
- ▶ Clip cover on (4).