

Product data sheet

TS 5000 R-ISM/G

ECline *



Overhead door closer system with guide rail for barrier-free, easy-to-open double leaf doors with integrated closing sequence control and electric hold-open device on the active leaf and smoke switch control unit

AREAS OF APPLICATION

- Fire and smoke protection doors
- Right and left double leaf single-action doors
- Single-action doors up to 2500 mm hinge clearance and 1250 mm leaf width
- Symmetrical and asymmetrical division of door possible
- Door leaf installation hinge side

PRODUCT FEATURES

- System with two door closers TS 5000 ECline and an R-ISM/G guide rail with hold-open unit on the active leaf
- Closing force of EN3-5 with variable adjustment
- Operating voltage 230 V AC
- Can be used for right and left hand doors without conversion
- Integrated smoke switch control unit, whose signal closes the door automatically in the event of a fire
- Smoke switch with contamination indicator and adaption of the alarm threshold
- Additional smoke detectors can be fitted
- Electric hold-open device in the guide rail with hold-open area of 80°-130°
- The passive leaf can be held open using a hold-open magnet
- Hydraulic latching action which accelerates the door shortly before it is closed
- Closing speed can be individually adjusted
- Integrated back check, slows down doors that are thrown open forcefully
- Visual closing force display for easy control of the setting
- All functions can be adjusted from the front

TECHNICAL DATA

Productname	TS 5000 R-ISM/G ECline *
Barrier-free in accordance with DIN 18040 up to leaf width (max.) in mm	1250 mm
Leaf width (max.)	1250 mm
Type of installation	Door leaf installation hinge side
Opening angle (max.)	180 °
Input voltage	230 V AC
Frequency of supply voltage	50 Hz
Minimum hinge clearance	1500 mm
Minimum passive leaf width	400 mm
Suitability for fire protection doors	Yes
Closing force adjustable	Yes, stepless
Adjustable closing speed	Yes
Latching action adjustable	Yes, via valve
Back check integrated	Yes, hydraulically adjustable
Position of closing force adjustment	Front
Visual closing force display	Yes
Hold-open function	Electrical
Hold-open device on the active leaf / passive leaf	Yes / No
Hold-open range	80 ° - 130 °
Smoke switch integrated	Yes

TS 5000 R-ISM/G ECLine *

Closing sequence control integrated

Yes

PART**R-ISM/G GUIDE RAIL TS 5000 ***

continuous, with integrated closing sequence control, electric hold-open device on the active leaf, smoke switch control unit, and levers



Designation	Description	Ident-No.	Colour	Supply voltage	Dimensions
R-ISM/G guide rail TS 5000 *	continuous, with integrated closing sequence control, electric hold-open device on the active leaf, smoke switch control unit, and levers	115621	according to RAL	230 V AC	2740 x 55 x 30 mm
R-ISM/G guide rail TS 5000 *	continuous, with integrated closing sequence control, electric hold-open device on the active leaf, smoke switch control unit, and levers	115619	silver-coloured	230 V AC	2740 x 55 x 30 mm
R-ISM/G guide rail TS 5000 *	continuous, with integrated closing sequence control, electric hold-open device on the active leaf, smoke switch control unit, and levers	115620	Stainless steel optic	230 V AC	2740 x 55 x 30 mm

CLOSER BODY TS 5000 ECLINE

Main body for overhead door closer with guide rail EN 3-5 with back check



Designation	Description	Ident-No.	Colour	Closing force in accordance with EN 1154	Dimensions
TS 5000 ECLINE door closer	Closing force EN 3-5, with back check (without guide rail and lever)	143640	silver-coloured	EN 3 - 5	287 x 47 x 60 mm
TS 5000 ECLINE door closer	Closing force EN 3-5, with back check (without guide rail and lever)	143642	Stainless steel face plate	EN 3 - 5	287 x 47 x 60 mm
TS 5000 ECLINE door closer	Closing force EN 3-5, with back check (without guide rail and lever)	143641	white RAL 9016	EN 3 - 5	287 x 47 x 60 mm
TS 5000 ECLINE door closer	Closing force EN 3-5, with back check (without guide rail and lever)	143643	according to RAL	EN 3 - 5	287 x 47 x 60 mm

ACCESSORIES**CB FLEX**

Carry bar for safe closing of double leaf fire protection doors



Designation	Description	Ident-No.	Colour
GEZE CB flex *	for use on all 2-leaf rebated doors. Concealed length adjustment with variable adjustment up to 210 mm leaf protrusion, hinged mechanism not visible, profile can be shortened if necessary, with attachment material	182652	white RAL 9016
GEZE CB flex	for use on all 2-leaf rebated doors. Concealed length adjustment with variable adjustment up to 210 mm leaf protrusion, hinged mechanism not visible, profile can be shortened if necessary, with attachment material	153602	silver-coloured
GEZE CB flex	for use on all 2-leaf rebated doors. Concealed length adjustment with variable adjustment up to 210 mm leaf protrusion, hinged mechanism not visible, profile can be shortened if necessary, with attachment material	153728	according to RAL

FLEXIBLE OPENING RESTRICTOR

For E and R guide rails, single and double leaf



Designation	Description	Ident-No.
Flexible opening restrictor	for guide rail 1-leaf: TS 5000 E/R/RFS (door leaf installation), Boxer E; 2-leaf: all E/R/ISM variants TS 5000 (incl. VPK) and Boxer	145311

COVER CAP DOOR CLOSER *

For TS 5000 (L)/TS 4000, can only be used for door leaf installation



Designation	Description	Ident-No.	Colour	Dimensions
Cover cap door closer *	for TS 5000 / TS 5000 L / TS 4000, can only be used for door leaf installation	067726	white RAL 9016	298 x 55 x 67.2 mm
Cover cap door closer *	for TS 5000 / TS 5000 L / TS 4000, can only be used for door leaf installation	072696	Stainless steel	298 x 55 x 67.2 mm
Cover cap door closer *	for TS 5000 / TS 5000 L / TS 4000, can only be used for door leaf installation	067724	silver-coloured	298 x 55 x 67.2 mm
Cover cap door closer *	for TS 5000 / TS 5000 L / TS 4000, can only be used for door leaf installation	000756	according to RAL	298 x 55 x 67.2 mm

TS 5000 R-ISM/G ECline *

Designation	Description	Ident-No.	Colour	Dimensions
Cover cap door closer *	for TS 5000 / TS 5000 L / TS 4000, can only be used for door leaf installation	067725	dark bronze	298 x 55 x 67.2 mm

GC 152 *

Smoke detector for GEZE hold-open systems



Designation	Description	Ident-No.	Colour	Supply voltage	Type of installation
GEZE smoke detector GC 152 *	Complete with base, 24 V DC, 20 mA, tested in accordance with EN54-7, with general approval for use with all GEZE hold-open systems FA GC 150, integrated line monitoring, conform with DIN EN 14637	139850	white RAL 9010	24 V DC	Ceiling

GC 153 *

Thermal detector for GEZE hold-open systems



Designation	Description	Ident-No.	Colour	Supply voltage	Type of installation
GEZE thermal detector GC 153 *	Complete with base, 24 V DC, 20 mA, tested in accordance with EN54-5, with general approval for use with all GEZE hold-open systems FA GC 150, integrated line monitoring, conform with DIN EN 14637	139881	white	24 V DC	Ceiling

AS 500

Manual trigger switch for the manual release of electrically controlled hold-open devices



TS 5000 R-ISM/G ECline *

Designation	Description	Ident-No.	Colour	Dimensions	Operating voltage
AS 500 manual trigger switch	for the manual release of electrically controlled hold-open devices including terminating resistor for line monitoring	116266	alpine white/red	80 x 80 x 9 mm	24 V DC
AS 500 manual trigger switch, glass	for the manual release of electrically controlled hold-open devices including terminating resistor for line monitoring, glass pane and 5 interchangeable labels	120880	alpine white/red	80 x 80 x 21 mm	24 V DC

GC 171 *

Wireless module for wireless connection of wireless components to GEZE hold-open systems



Designation	Description	Ident-No.	Colour	Supply voltage	Dimensions
GEZE GC 171 wireless module *	for the wireless connection of wireless components (GC 172 wireless smoke detector; GC 173 wireless thermal detector; GC 175 wireless input module) on GEZE hold-open systems.	163051	anthracite	24 V DC	177 x 30 x 18 mm

GC 175 *

Wireless input module for wireless connection of manual trigger switches to the GC 171 wireless module



Designation	Description	Ident-No.	Colour	Supply voltage	Dimensions
GEZE GC 175 wireless input module *	for the wireless connection of manual trigger switches to the GEZE GC 171 wireless module, applicable for all GEZE hold-open systems	163068	black	3 V DC	52 x 52 x 32 mm

TS 5000 R-ISM/G ECline ***WIRELESS KIT FA GC 170 ***

Set comprising GC 171 wireless module and GC 172 wireless ceiling-mounted smoke detector



Designation	Description	Ident-No.
GEZE FA GC 170 wireless KIT *	Set consisting of: 1 piece GC 171 wireless module for the wireless extension of GEZE hold-open systems and 2 pieces GC 172 wireless ceiling-mounted smoke detectors	195524

COVER CAP DOOR CLOSER *

For TS 4000/5000, curved shape

Designation	Description	Ident-No.	Colour	Dimensions
Cover cap door closer *	for TS 5000/TS 4000, semi-radial, can only be used for door leaf installation	092943	Polished stainless steel	337 x 51 x 72 mm
Cover cap door closer *	for TS 5000/TS 4000, semi-radial, can only be used for door leaf installation	092944	Satin stainless steel	337 x 51 x 72 mm

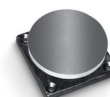
COVER CAP DOOR CLOSER *

For TS 4000/5000, rectangular shape

Designation	Description	Ident-No.	Colour	Dimensions
Cover cap door closer *	for TS 5000 / TS 4000, square, can only be used for door leaf installation	092938	Polished stainless steel	298 x 51 x 72 mm
Cover cap door closer *	for TS 5000 / TS 4000, square, can only be used for door leaf installation	092939	Satin stainless steel	298 x 51 x 72 mm

TS 5000 R-ISM/G ECline ***MAGNETIC COUNTERPLATE BASIC MODEL ***

Standard version, rubber support



Designation	Description	Ident-No.	Dimensions
GEZE magnetic counter plate *	Standard version, rubber support	115954	55 x 55 x 18 mm

MAGNETIC COUNTERPLATE SPRING BUFFER *

Version with spring buffer



Designation	Description	Ident-No.	Dimensions
GEZE magnetic counter plate *	Version with spring buffer	115955	55 x 55 x 79 mm

MAGNETIC COUNTERPLATE JOINT *

Version with adjustable joint



Designation	Description	Ident-No.	Dimensions
GEZE magnetic counter plate *	Version with adjustable joint	115956	55 x 55 x 50 mm

HOLD-OPEN MAGNET BASIC MODEL *

With screw attachment on the rear and without mounting plate



Designation	Description	Ident-No.	Dimensions	Type of installation
GEZE door hold-open magnet *	Basic model, without mounting plate, screw fixture on the back	115830	50 x 50 x 30 mm	Surface-mounted, Integrated

TS 5000 R-ISM/G ECline ***HOLD-OPEN MAGNET FLEXIBLE 185 MM ***

For wall or ceiling installation with stand pipe 185 mm



Designation	Description	Ident-No.	Dimensions	Type of installation
GEZE door hold-open magnet *	Wall/ceiling mounting, standpipe 185 mm, flexible up to 110 mm, easy to shorten, magnetic head bendable through 90°	115952	90 x 80 x 185 mm	Wall, Ceiling, Floor

HOLD-OPEN MAGNET FLEXIBLE 335 MM *

For wall or ceiling installation with stand pipe 335 mm



Designation	Description	Ident-No.	Dimensions	Type of installation
GEZE door hold-open magnet *	Wall/ceiling mounting, standpipe 335 mm, flexible up to 110mm, easy to shorten, magnetic head bendable through 90°	115953	90 x 80 x 335 mm	Wall, Ceiling, Floor

HOLD-OPEN MAGNET WALL INSTALLATION

For wall installation with base plate



Designation	Description	Ident-No.	Dimensions	Type of installation
GEZE door hold-open magnet	Wall mounting, with base plate	115829	93 x 65 x 33 mm	Surface-mounted installation

TS 5000 R-ISM/G ECline ***HOLD-OPEN MAGNET WALL INSTALLATION 65 MM ***

For wall installation with base 65 mm



Designation	Description	Ident-No.	Dimensions	Type of installation
GEZE door hold-open magnet *	Wall mounting with base 65 mm	155573	70 x 70 x 65 mm	Wall

HOLD-OPEN MAGNET WALL INSTALLATION SURFACE-MOUNTED *

For wall installation surface mounting or floor mounting with accessories and base



Designation	Description	Ident-No.	Dimensions	Type of installation
GEZE door hold-open magnet *	Wall mounting surface mounting or floor mounting with base accessories (not included in scope of delivery)	155569	110 x 85 x 40 mm	Surface-mounted installation, Floor

HOLD-OPEN MAGNET WALL INSTALLATION FLUSH-MOUNTED *

For wall installation flush-mounted



Designation	Description	Ident-No.	Dimensions	Type of installation
GEZE door hold-open magnet *	Flush-mounted wall mounting	155567	85 x 85 x 30 mm	Flush-mounted installation

GC 172

Wireless smoke detector for wireless connection to the GC 171 wireless module



TS 5000 R-ISM/G ECl ine *

Designation	Description	Ident-No.	Supply voltage	Dimensions	Type of installation
GC 172 wireless smoke detector	for the wireless connection to GEZE hold-open systems, battery-operated with 8 years battery lifetime, with base, tested in accordance with EN 54-7 and EN 54-25, general construction technique permit for use with all GEZE hold-open systems	195522	3 V DC	110 x 110 x 70 mm	Ceiling

GC 173

Wireless thermal detector for wireless connection to the GC 171 wireless module



Designation	Description	Ident-No.	Supply voltage	Dimensions	Type of installation
GC 173 wireless thermal detector	for the wireless connection to GEZE hold-open systems, battery-operated with 8 years battery lifetime, with base, tested in accordance with EN 54-7 and EN 54-25, general construction technique permit for use with all GEZE hold-open systems	195523	3 V DC	110 x 110 x 70 mm	Ceiling

INSTALLATION MATERIAL**MOUNTING PLATE GUIDE RAIL ***

for R-ISM guide rail



Designation	Description	Ident-No.	Colour
Mounting plate guide rail	for R-ISM guide rail	118690	silver-coloured
Mounting plate guide rail	for R-ISM guide rail	118701	according to RAL

TS 5000 R-ISM/G ECLine ***MOUNTING PLATE DOOR CLOSER**

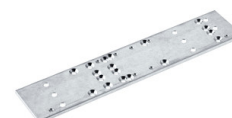
For TS 5000 and TS 4000 with hole pattern in accordance with DIN EN 1154 Supplement 2



Designation	Description	Ident-No.	Colour
Mounting plate door closer	for TS 5000/TS 4000 with hole pattern according to DIN EN 1154 Supplement 1	068627	white RAL 9016
Mounting plate door closer	for TS 5000/TS 4000 with hole pattern according to DIN EN 1154 Supplement 1	057956	Galvanised
Mounting plate door closer	for TS 5000/TS 4000 with hole pattern according to DIN EN 1154 Supplement 1	029176	according to RAL
Mounting plate door closer	for TS 5000/TS 4000 with hole pattern according to DIN EN 1154 Supplement 1	049185	silver-coloured
Mounting plate door closer	for TS 5000/TS 4000 with hole pattern according to DIN EN 1154 Supplement 1	137725	Stainless steel optic
Mounting plate door closer	for TS 5000/TS 4000 with hole pattern according to DIN EN 1154 Supplement 1	052351	dark bronze

MOUNTING PLATE DOOR CLOSER *

For TS 5000 and TS 4000 with hole pattern in accordance with DIN EN 1154 Supplement 2



Designation	Description	Ident-No.
Mounting plate *	for TS 5000/TS 4000 with hole pattern according to DIN EN 1154 Supplement 1	083992

* The products designated above may vary in form, type, characteristics, function, or availability depending on the country. Please get in touch with your GEZE contact person if you have any questions.