

# Product data sheet

# ECdrive T2-FR \*



Automatic linear sliding door system in escape and rescue routes for doors up to 140 kg leaf weight

## AREAS OF APPLICATION

- Single and double leaf sliding door systems along escape and rescue routes
- Interior and exterior doors with high access frequency
- Complete solution for entrance areas with GCprofile Therm and fanlight
- If extra impermeability or energy efficiency are needed
- Opening widths from 700 to 3000 mm possible
- Door leaf weight of up to 140 kg per leaf
- Suitable profile systems are fine-framed profile systems with insulating and MONO glass, GCprofile Therm, toughened safety glass clamping profile, on-site frame and wooden leaves

## PRODUKTBESCHREIBUNG EN

With its streamlined design, the new ECdrive T2-FR guarantees new design possibilities with an outstanding price-performance ratio. It can be combined with the GCprofile Therm profile system, to further improve energy efficiency.

## PRODUCT FEATURES

- Slim design with a cover height of just 100 mm for greater creative freedom
- With double roller carriage and GCprofile Therm up to 140 kg leaf weight
- Efficient installation thanks to pre-drilled tracks and elongated holes
- Full floor guide available for controlled diversion of rainwater
- Integrated cable routings make cable laying easier
- Can be networked, and integrated into the building automation via open standard (BACnet)
- Independent error recognition and recording
- Freely configurable inputs and outputs for different functions
- Integrated rechargeable battery for emergency opening in the event of a power failure
- Self-cleaning roller carriage reduces maintenance effort and costs
- Various mechanical and electrical locks are optionally available
- Service interface for easy maintenance

## TECHNICAL DATA

Productname	ECdrive T2-FR *
For 1-leaf door systems	Yes
For 2-leaf door systems	Yes
Fine-framed insulating glass	Yes
MONO glass fine-framed	Yes
ESG clamping profile	Yes
Integrated all-glass system (IGG)	Yes
Framed leaf (on site)	Yes
Height	100 mm
Depth	190 mm
Leaf weight (max.) 1-leaf	120 kg
Leaf weight (max.) 1-leaf with GCprofile Therm and double roller carriage	140 kg
Leaf weight (max.) 2-leaf	120 kg
Leaf weight (max.) 2-leaf with GCprofile Therm and double roller carriage	140 kg
Opening width 1-leaf	700 mm - 3000 mm
Opening width 1-leaf with GCprofile Therm	1500 mm
Opening width 2-leaf	900 mm - 3000 mm
Opening width 2-leaf with GCprofile Therm	3000 mm
Service temperature	-15 - 50 °C
IP rating	IP20
Disconnection from mains	Main switch in the drive
Standard conformity	AutSchR, DIN 18650, DIN EN ISO 13849: Performance Level D, EN 16005

## PART

### OPERATOR ECDRIVE T2-FR \*

Automatic linear sliding door drive in escape and rescue routes for doors with a leaf weight of up to 140 kg



Designation	Description	Ident-No.	Supply voltage
Operator ECdrive T2-FR *	Drive system for linear sliding doors in high traffic areas	180375	230 V

**ACCESSORIES****EFT ELBOW SWITCH \***

Stainless steel elbow switch with IP65 IP rating for activating automatic doors



Designation	Description	Ident-No.	Colour	Dimensions	Type of installation
EFT elbow switch	Very flat design / IP rating IP65	119898	Stainless steel	75 x 250 x 17 mm	Surface-mounted installation

**KFT ELBOW SWITCH**

Plastic elbow switch, IP rating IP20, for activation of automatic doors



Designation	Description	Ident-No.	Colour	Dimensions	Type of installation
KFT elbow switch	Very flat design, IP rating IP20	114077	stainless steel colour	90 x 179 x 23 mm	Surface-mounted installation
KFT elbow switch	Very flat design, IP rating IP20	114078	white	90 x 179 x 23 mm	Surface-mounted installation

**LS 990 ELBOW SWITCH**

Elbow switch for activating automatic doors



Designation	Description	Ident-No.	Colour	Dimensions	Type of installation
LS 990 elbow switch	IP rating IP30 H=223mm	128583	Stainless steel	81 x 223 x 18 mm	Flush-mounted installation
LS 990 elbow switch	IP rating IP30 H=223mm	128582	Stainless steel	81 x 223 x 51 mm	Surface-mounted installation
LS 990 elbow switch	IP rating IP30 H=223mm	141041	alpine white	81 x 223 x 51 mm	Surface-mounted installation
LS 990 elbow switch	IP rating IP30 H=223mm	141042	alpine white	81 x 223 x 18 mm	Flush-mounted installation

### AS 500 ROCKER PUSH BUTTON

Activation of all GEZE automatic doors



Designation	Ident-No.	Colour	Dimensions	Type of installation
AS 500 rocker push button	120888	alpine white	80 x 80 x 9 mm	Flush-mounted installation

### GC 365

Combined detector for activating and protecting automatic sliding doors with four different infrared light curtain configuration settings



Designation	Description	Ident-No.	Colour	Dimensions	Output
Combined detector GC 365 R	Combined detector for the activation and safeguarding of automatic sliding doors	160283	black	267 x 61 x 38 mm	Potential-free relay contact
Combined detector GC 365 SF	Combined detector for the activation and safeguarding of automatic sliding doors in escape route direction	160284	black	267 x 61 x 38 mm	

### GC 341 \*

Safety sensor for automatic doors



Designation	Description	Ident-No.	Colour	Dimensions	Operating voltage
GC 341 *	Safety sensor for automatic doors	160285	black	267 x 61 x 38 mm	24 V DC

## DPS

Display programme switch for setting the mode of operation for automatic doors



Designation	Description	Ident-No.	Colour	Dimensions	Operating voltage
Display programme switch DPS with OFF switch	Configuring the mode of operation as well as commissioning and parameter setting for automatic doors / with 5x control keys, 2x7 segment display, alphanumerical fault display, IP rating IP40	151524	alpine white	80 x 80 x 53 mm	24 V DC
DPS with OFF switch and SCT key switch	in combined double frame without Euro profile half cylinder	155810	alpine white	80 x 151 x 50 mm	24 V DC

## MPS

Mechanical programme switch for setting the mode of operation for automatic doors



Designation	Description	Ident-No.	Colour	Dimensions	Operating voltage
MPS mechanical programme switch	Setting of the mode of operation of automatic doors with rotary knob, LED fault display, IP rating IP40 / suitable for switch programmes with 55x55mm switch insert	113226	alpine white	80 x 80 x 24 mm	24 V DC
MPS ST mechanical programme switch	Setting of the mode of operation of automatic doors with key, LED fault display, IP rating IP40, keyed alike cylinder, incl. 2x keys / suitable for switch programmes with 55x55mm switch insert	113227	alpine white	80 x 80 x 24 mm	24 V DC

## SCT STAINLESS STEEL \*

Key switch stainless steel for authorised activation and for changing the mode of operation of automatic doors



Designation	Description	Ident-No.	Colour	Dimensions	Type of installation
Key switch, switching operation without Euro profile half cylinder	Mounting with claws or screws, one-sided switching operation (key can be removed in the central position), cover can only be removed with key, light alloy housing, IP rating IP54	098870	silver-coloured	79 x 79 x 12.5 mm	Flush-mounted installation

Designation	Description	Ident-No.	Colour	Dimensions	Type of installation
Key switch with Euro profile half cylinder and three keys	adjustable stay-put or switching operation on both sides (key can be pulled out in the central position), cover can only be removed with key, light alloy housing, IP rating IP54	137056	silver-coloured		Surface-mounted installation
Key switch, stay-put without Euro profile half cylinder	Attachment with claws or screws, stay-put on one side (key can be removed in the central position), cover can only be removed with key, light alloy housing, IP rating IP54	111357	silver-coloured	79 x 79 x 12 mm	Flush-mounted installation

### SCT KEY SWITCH

Key switch for authorised activation and for changing the mode of operation of automatic doors



Designation	Description	Ident-No.	Colour	Dimensions	Type of installation
SCT key switch	2-pin with Euro profile half cylinder, two-sided switching operation, without AS 500 frame	118478	alpine white		
SCT key switch	1 pin without Euro profile half cylinder, single-sided switching operation	117996	alpine white	80 x 80 x 11 mm	Flush-mounted installation

### SCT 221

Key switch for authorised activation and changing the mode of operation of automatic doors, surface and flush-mounted



Designation	Description	Ident-No.	Colour	Dimensions	Type of installation
SCT 221 key switch	One-sided switching operation, without Euro profile half cylinder / One-sided switching operation (key can only be removed in the central position), cover can only be removed with key, light alloy housing, IP rating IP54	054240	silver-coloured	75 x 75 x 11 mm	Flush-mounted installation
SCT 221 key switch	One-sided switching operation, without Euro profile half cylinder / One-sided switching operation (key can only be removed in the central position), cover can only be removed with key, light alloy housing, IP rating IP54	054532	silver-coloured	75 x 75 x 50 mm	Surface-mounted installation

**TPS**

Keypad programme switch for setting the mode of operation for automatic doors



Designation	Description	Ident-No.	Colour	Dimensions	Operating voltage
TPS keypad programme switch	with 2 control keys, LED display, coded fault display, IP rating IP40 / suitable for switch programmes with 55x55mm switch insert	113231	alpine white	80 x 80 x 11 mm	24 V DC
TPS keypad programme switch and SCT key switch	in combined double frame without Euro profile half cylinder	113232	alpine white	80 x 152 x 11 mm	24 V DC

**WRM-24 \***

Receiving module for activating automatic doors and window drives with 24 V DC



Designation	Description	Ident-No.	Colour	Dimensions	Output
WRM-24 receiving module *	52 x 47 x 23 mm (W x H x D), for installation in a standard flush-mounted socket / 24 V DC operating voltage, pulsed operation or pulsed and continuous operation	131213	black	52 x 52 x 47 x 23 mm	2 potential-free relay contacts

**WRM-24B \***

Receiving module for activating automatic doors and window drives with 24 V DC



Designation	Description	Ident-No.	Colour	Dimensions	Output
WRM-24B receiving module *	130 x 80 x 35 mm (W x H x D), for surface mounting with protection class IP54 / 24 V DC operating voltage, pulsed operation or pulsed and continuous operation	131214	white	130 x 130 x 80 x 35 mm	2 potential-free relay contacts



**WTH \***

Remote control for activating GEZE automatic doors and window drives via the GEZE wireless programme



Designation	Description	Ident-No.	Dimensions	Operating voltage	Type of installation
WTH-2 remote control, 2 channel *	with wall fixing and IP rating IP54	131210	78 x 51 x 15 mm	12 V DC	Wall
WTH-4 remote control, 4 channel *	with wall fixing and IP rating IP54	131211	78 x 51 x 15 mm	12 V DC	Wall
WTH-1 remote control, 1 channel *	with wall fixing and IP rating IP54	131209	78 x 51 x 15 mm	12 V DC	Wall

**AS 500**

Manual trigger switch for the manual release of electrically controlled hold-open devices



Designation	Description	Ident-No.	Colour	Dimensions	Operating voltage
AS 500 manual trigger switch	for the manual release of electrically controlled hold-open devices including terminating resistor for line monitoring	116266	alpine white/red	80 x 80 x 9 mm	24 V DC
AS 500 manual trigger switch, glass	for the manual release of electrically controlled hold-open devices including terminating resistor for line monitoring, glass pane and 5 interchangeable labels	120880	alpine white/red	80 x 80 x 21 mm	24 V DC

**MULTI-FUNCTION RELAY \***

Digital settable multifunction time relay



Designation	Description	Ident-No.	Dimensions	Type of installation
Multifunction relay 10-250V AC/DC *	Relay with built-in time-dependent activation, times for On and Off phase separately adjustable from 0.75 s to 60 min Possible applications: response delay, flashing relay, etc.	182160	18 x 86 x 58 mm	Top hat rail mounting

**GC 307+ \***

Non-contact proximity switch for activating automatic doors



Designation	Description	Ident-No.	Colour	Dimensions	Type of installation
GC 307+ (hand icon) *	automatic doors	195727	alpine white	80 x 80 x 21 mm	Surface-mounted installation
GC 307+ (WC icon) *	automatic doors / Suitable for Powerturn, EMD, and standard sliding doors	195751	alpine white	80 x 80 x 21 mm	Surface-mounted installation
GC 307+ (hand icon) *	automatic doors	193226	alpine white	80 x 80 x 8 mm	Flush-mounted installation
GC 307+ (WC icon) *	automatic doors / Suitable for Powerturn, EMD, and standard sliding doors	195750	alpine white	80 x 80 x 8 mm	Flush-mounted installation

**GC 339+ \***

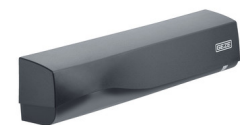
Safety sensor for automatic sliding, revolving, and curved sliding doors, as well as for windows



Designation	Description	Ident-No.	Colour	Dimensions	Output
GC 339+ *	Safety sensor for automatic doors	203858	black	209 x 58 x 47 mm	Potential-free relay contact

**GC 363+ \***

Combined detector for activating and protecting automatic sliding doors with ten different infrared light curtain configuration settings



Designation	Description	Ident-No.	Colour	Dimensions	Output
GC 363+ R *	Combined detector for the activation and safeguarding of automatic sliding doors	203854	black	270 x 58 x 58 mm	Potential-free relay contact
GC 363+ SF *	Combined detector for the activation and safeguarding of automatic sliding doors	203856	black	270 x 58 x 58 mm	

**SW MINI-BUTTON \***

Can be used in the retail sector for one-time opening of automatic doors to leave the building in night mode



Designation	Ident-No.	Colour	Dimensions	Type of installation
SW mini-button *	098861	black	20 x 20 x 11 x 22 mm	Flush-mounted installation

**DIGITAL PROGRAMMABLE TIMER \***

For time-controlled changes of modes of operation on automatic doors

**E2 ROCKER PUSH BUTTON**

Activation of all GEZE automatic doors



Designation	Ident-No.	Colour	Dimensions	Type of installation
E2 rocker push button	094013	pure white matt	80.8 x 80.8 x 9.3 mm	Flush-mounted installation

**LS 990 ROCKER PUSH BUTTON**

Activation of all GEZE automatic doors



Designation	Ident-No.	Colour	Dimensions	Type of installation
LS 990 rocker push button	098396	Stainless steel	81 x 81 x 11 mm	Flush-mounted installation



## SERVICE INTERFACE

Faster diagnosis and maintenance



Designation	Description	Ident-No.
Service interface EC T2	to be mounted onto cover of sliding doors. Allows the connection of Service Terminal or Bluetooth Interface.Connector cable length: 3 meters	181028

\* The products designated above may vary in form, type, characteristics, function, or availability depending on the country. Please get in touch with your GEZE contact person if you have any questions.