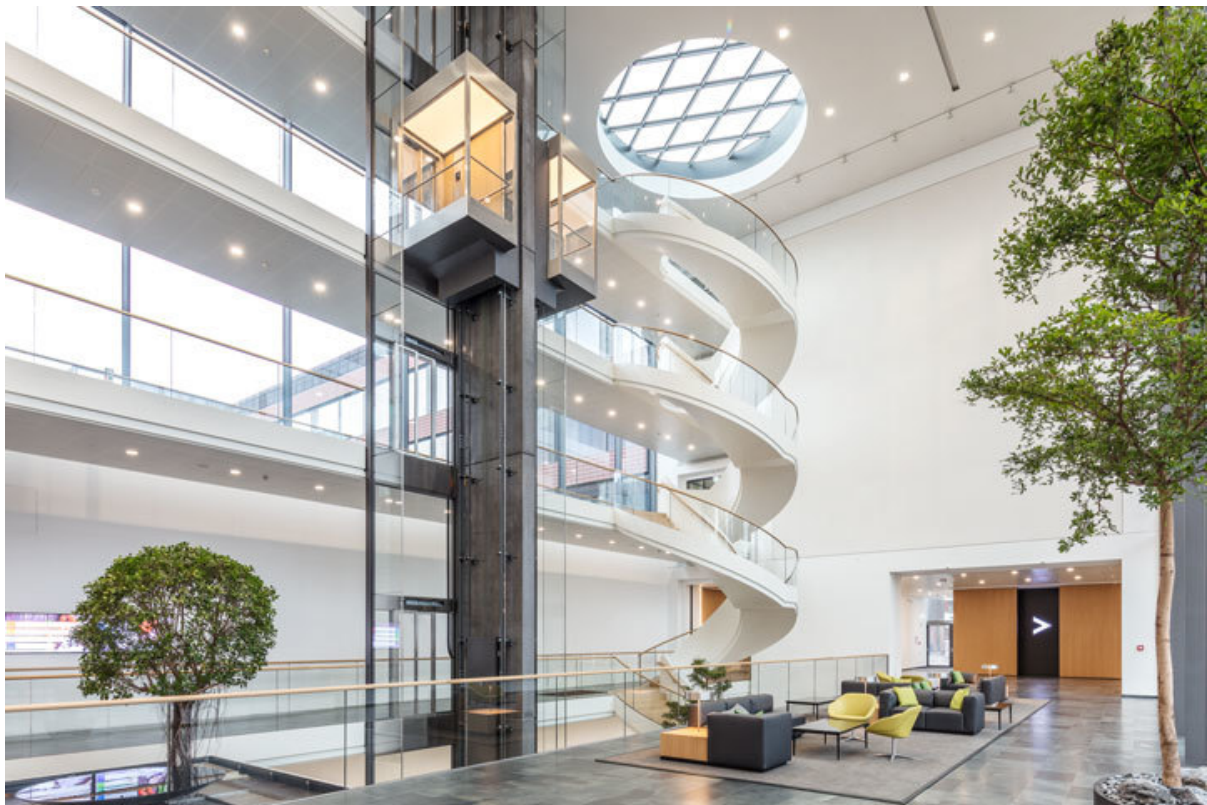


Product data sheet

Cover cap door closer

*



For TS 3000/TS 2000, curved shape

AREAS OF APPLICATION

→ Design cover of door closer body

Cover cap door closer *



PRODUCT FEATURES

→ Curved shape

TECHNICAL DATA

Productname	Cover cap door closer *
Length	277 mm
Width	54 mm
Height	72 mm

VARIANTS / ORDER INFO

Designation	Description	Ident-No.	Colour	Dimensions
Cover cap door closer *	for TS 3000/TS 2000, semi-radial, can only be used for door leaf installation	092928	Polished stainless steel	277 x 54 x 72 mm
Cover cap door closer *	for TS 3000/TS 2000, semi-radial, can only be used for door leaf installation	092929	Satin stainless steel	277 x 54 x 72 mm

* The products designated above may vary in form, type, characteristics, function, or availability depending on the country. Please get in touch with your GEZE contact person if you have any questions.